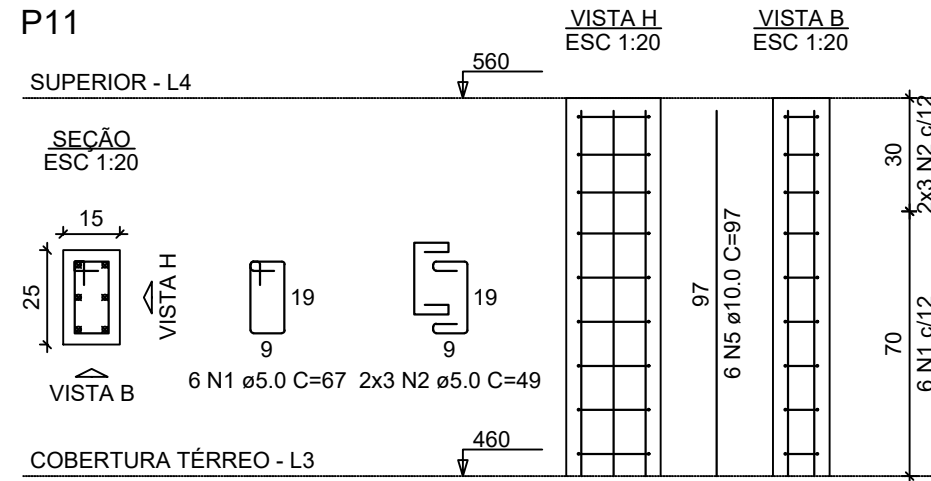
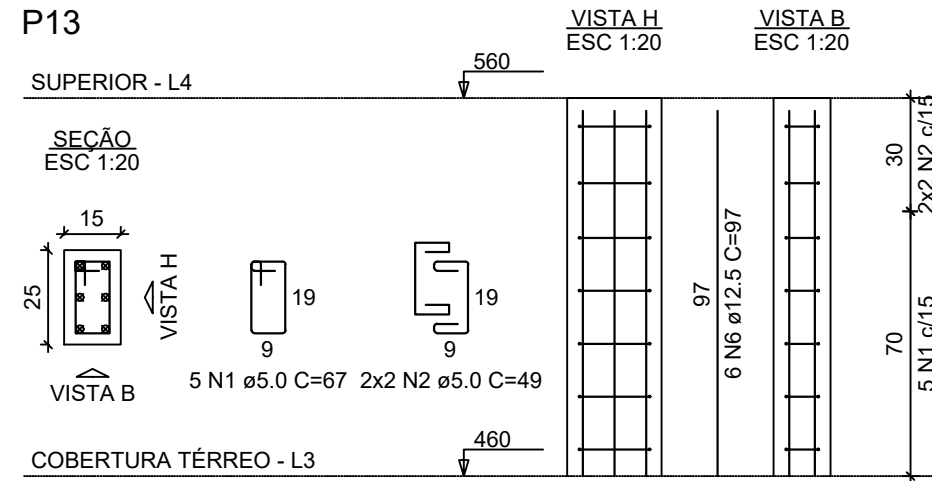


P11



P13



RELAÇÃO DO AÇO

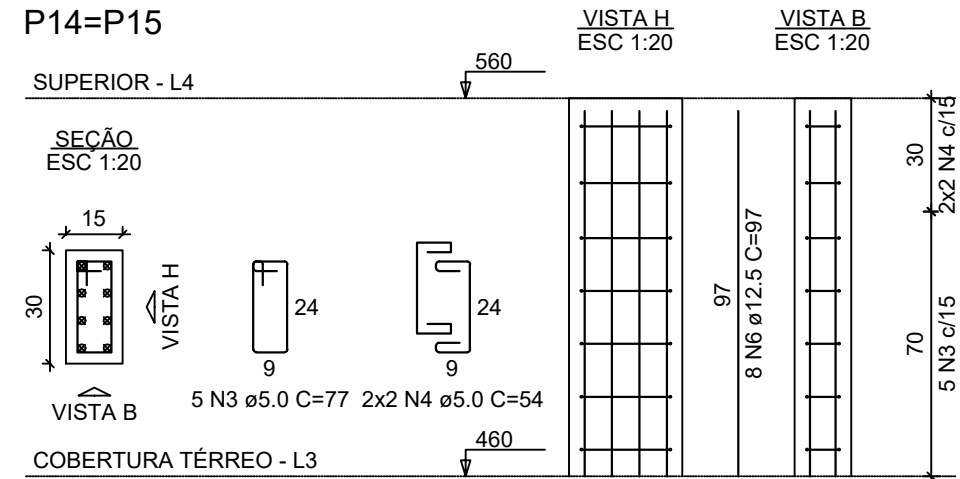
AÇO	N	DIAM (mm)	QUANT	C.UNIT (cm)	C.TOTAL (cm)
CA60	1	5.0	23	67	1541
	2	5.0	22	49	1078
	3	5.0	10	77	770
CA50	4	5.0	8	54	432
	5	10.0	14	97	1358
	6	12.5	22	97	2134

RESUMO DO AÇO

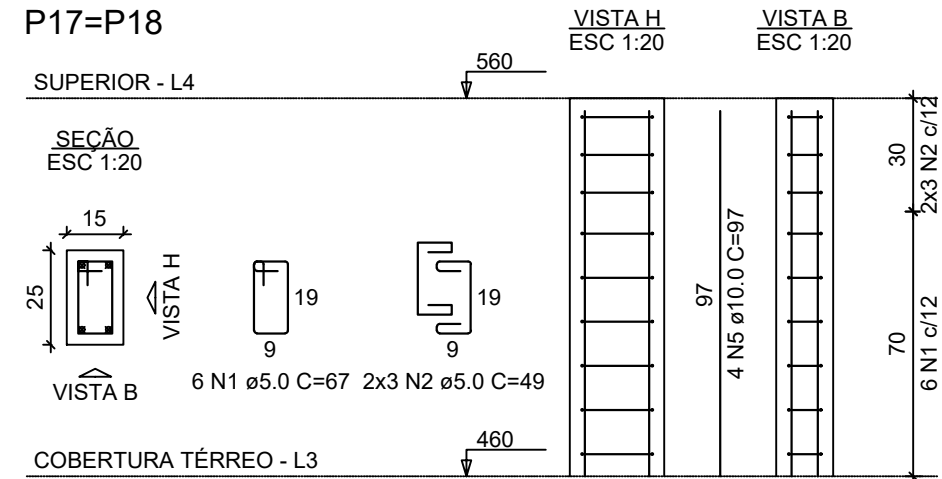
AÇO	DIAM (mm)	C.TOTAL (m)	QUANT + 10% (Barras)
CA50	10.0	13.6	2
CA60	12.5	21.3	2
CA60	5.0	38.2	4
PESO TOTAL (kg)			
CA50	31.8		
CA60	6.5		

Volume de concreto (C-25) = 0.24 m³
 Área de forma = 5.00 m²

P14=P15




P17=P18




 Matheus Ben-Hur Costa Souza
 Engenheiro Civil
 CREA-PA 1518192939

PREFEITURA MUNICIPAL DE PORTO DE MOZ

	TÍTULO: VESTIÁRIO CAMPO - CENTRO POLIESPORTIVO - ESTRUTURAL	FOLHA: EST 11/52
	ASSUNTO: PILARES COBERTURA SUPERIOR	
DATA: 03/06/2019	ESCALA: INDICADA	LOCAL: TRAV. DUQUE DE CAXIAS, 330, CABANAGEM, PORTO DE MOZ
RESPONSÁVEIS TÉCNICOS: MATHEUS BEN-HUR COSTA SOUZA, CREA-PA 1518192939 BRUNO VIANA PAMPLONA, CREA-PA 16949D		
		REVISÃO: 00