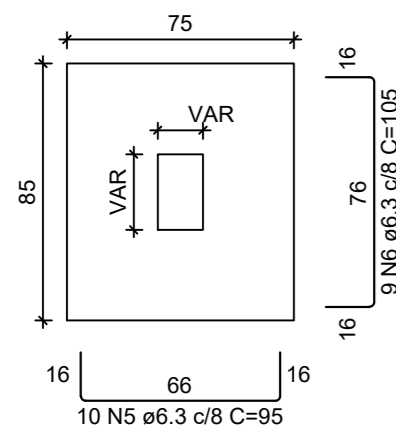
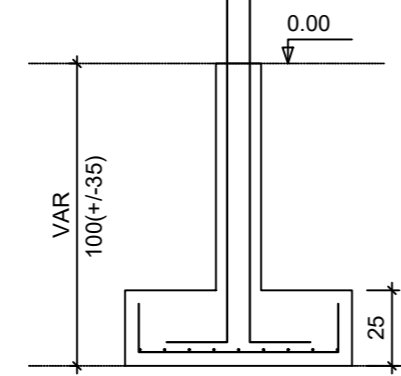


S1=S2=S4=S5=S6=S7=S8=S10=S11=S12=S16

=S19
PLANTA
ESC 1:25



CORTE
ESC 1:25



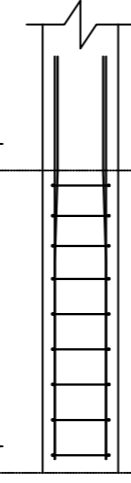
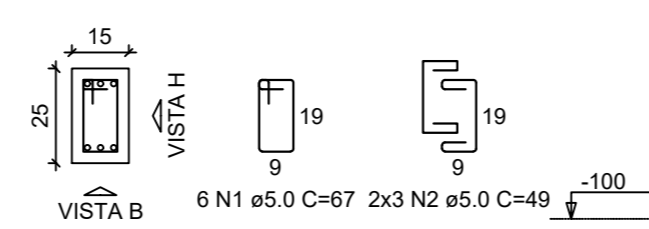
P1=P5

VISTA H
ESC 1:25

VISTA B
ESC 1:25

FUNDAÇÃO - L1

SEÇÃO
ESC 1:20



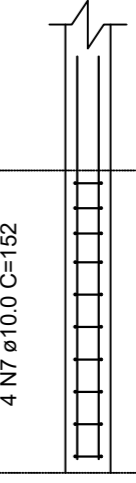
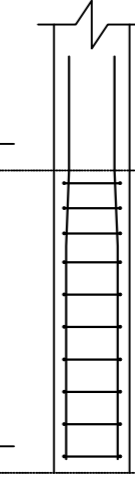
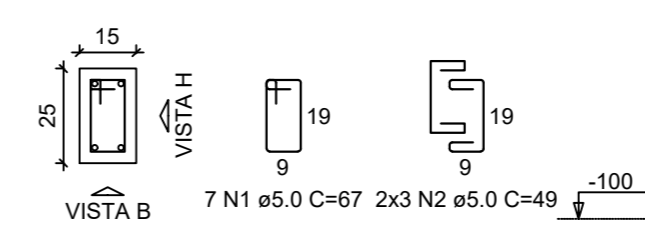
P10=P12

VISTA H
ESC 1:25

VISTA B
ESC 1:25

FUNDAÇÃO - L1

SEÇÃO
ESC 1:20



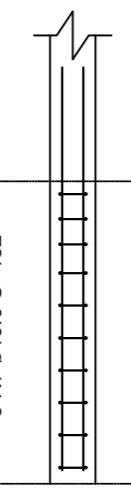
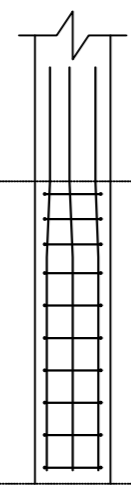
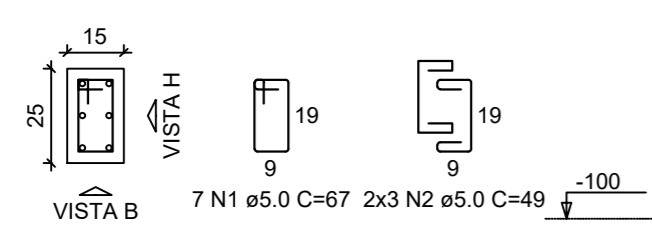
P11

VISTA H
ESC 1:25

VISTA B
ESC 1:25

FUNDAÇÃO - L1

SEÇÃO
ESC 1:20



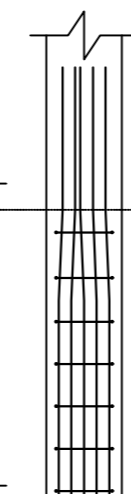
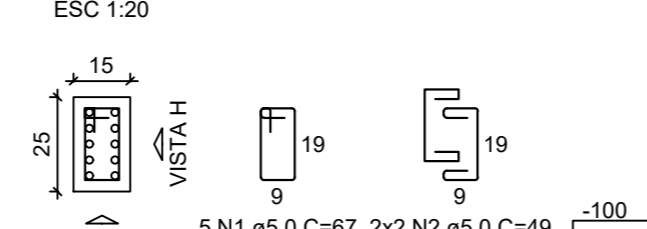
P16

VISTA H
ESC 1:25

VISTA B
ESC 1:25

FUNDAÇÃO - L1

SEÇÃO
ESC 1:20



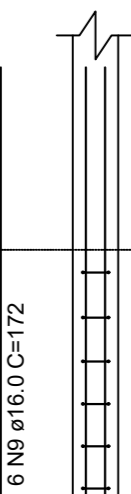
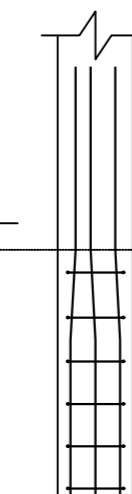
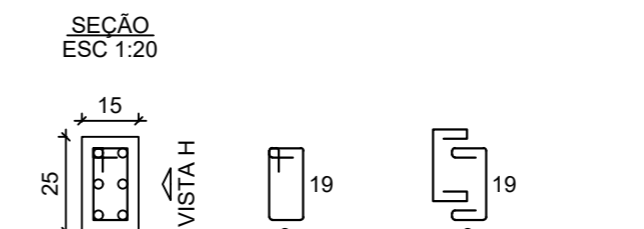
P19

VISTA H
ESC 1:25

VISTA B
ESC 1:25

FUNDAÇÃO - L1

SEÇÃO
ESC 1:20



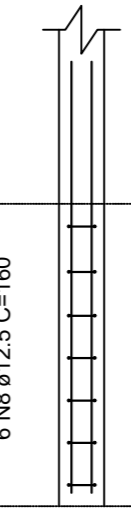
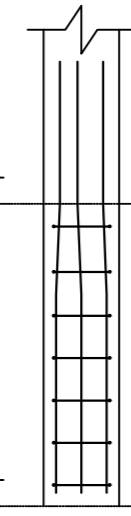
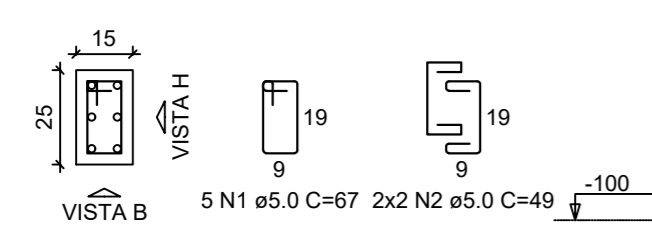
P2=P4=P7

VISTA H
ESC 1:25

VISTA B
ESC 1:25

FUNDAÇÃO - L1

SEÇÃO
ESC 1:20



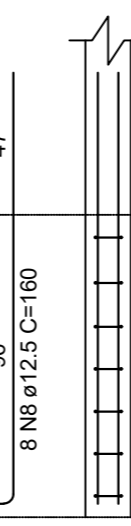
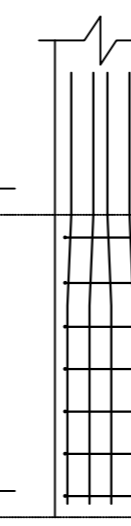
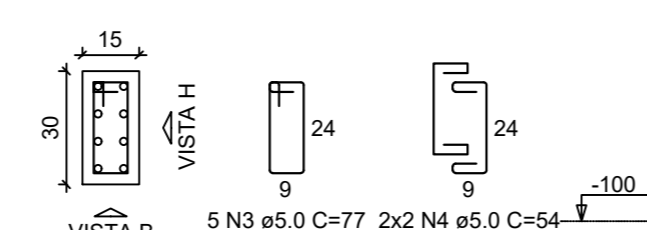
P6

VISTA H
ESC 1:25

VISTA B
ESC 1:25

FUNDAÇÃO - L1

SEÇÃO
ESC 1:20



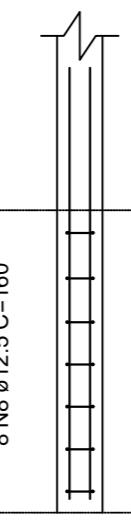
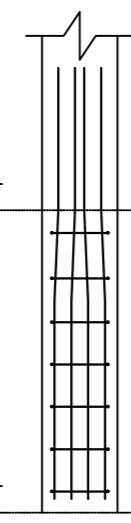
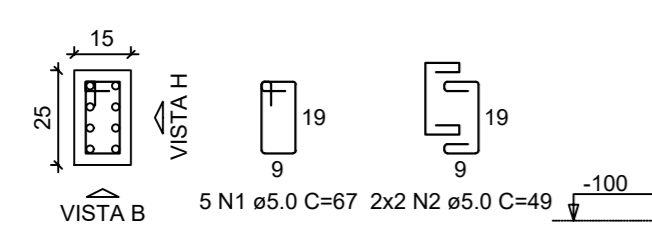
P8

VISTA H
ESC 1:25

VISTA B
ESC 1:25

FUNDAÇÃO - L1

SEÇÃO
ESC 1:20



RELAÇÃO DO AÇO

AÇO	N	DIAM (mm)	QUANT	C. UNIT (cm)	C. TOTAL (cm)
CA60	1	5.0	63	67	4221
	2	5.0	54	49	2646
	3	5.0	5	77	385
	4	5.0	4	54	216
CA50	5	6.3	120	95	11400
	6	6.3	108	105	11340
	7	10.0	26	152	3952
	8	12.5	44	160	7040
	9	16.0	6	172	1032

RESUMO DO AÇO

AÇO	DIAM (mm)	C. TOTAL (m)	QUANT + 10% (Barras)
CA50	6.3	227.4	21
	10.0	39.5	4
	12.5	70.4	7
	16.0	10.3	1
CA60	5.0	74.7	7
PESO TOTAL (kg)			
CA50		180.5	
CA60		12.7	

Volume de concreto (C-25) = 2.37 m³
Área de forma = 19.30 m²

Matheus Ben-Hur Costa Souza
Engenheiro Civil
CREA-PA 1518192939

Notas:

- Tomar medidas no local
- Medidas em centímetros
- Níveis indicados em planta são do topo dos elementos em relação ao 0,00m

Características dos materiais	
f _{ck} (MPa)	E _{cs} (MPa)
25	24150

Dimensão máxima do agregado = 19 mm

Observações:

Para a elaboração deste projeto foram seguidas as normas:

- NBR6118:2014 - Projeto e Estruturas de Concreto - Procedimentos
- NBR6120:2000 - Cargas Para o Cálculo de Estruturas de Edificações
- NBR6123:1990 - Forças Devidas ao Vento em Edificações
- NBR8681:2003 - Ações e Segurança nas Estruturas - Procedimento

PREFEITURA MUNICIPAL DE PORTO DE MOZ		
	TÍTULO: VESTIÁRIO CAMPO - CENTRO POLIESPORTIVO - ESTRUTURAL	FOLHA: EST 5/52
	ASSUNTO: SAPATAS 2	
DATA: 03/06/2019	ESCALA: INDICADA	LOCAL: TRAV. DUQUE DE CAXIAS, 330, CABANAGEM, PORTO DE MOZ
RESPONSÁVEIS TÉCNICOS: MATHEUS BEN-HUR COSTA SOUZA, CREA-PA 1518192939 BRUNO VIANA PAMPLONA, CREA-PA 16949D		
		REVISÃO: 00