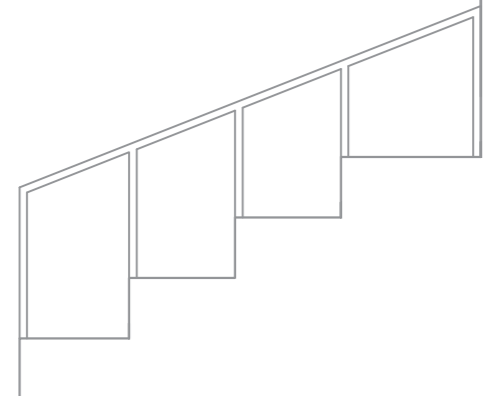
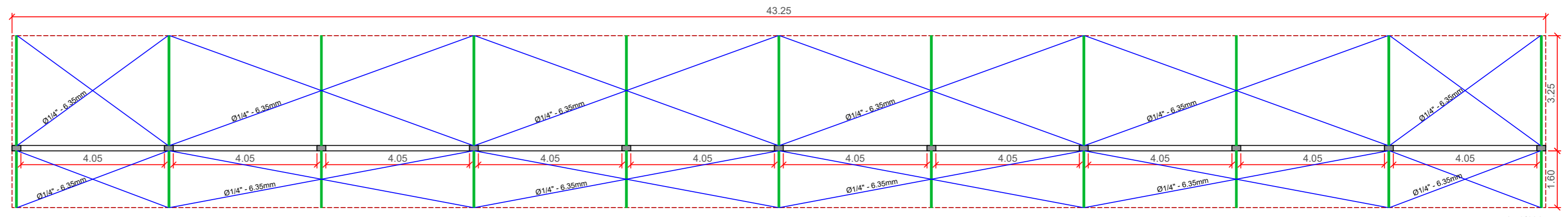


OBS.: SOLDA ELETRODUTO 60x13x3.25

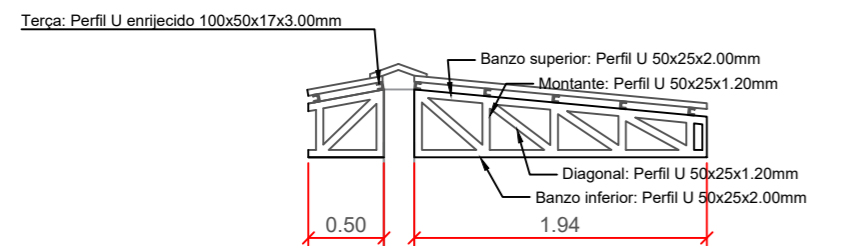


escala 1/50

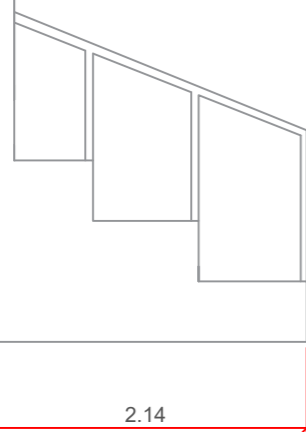


escala 1/100

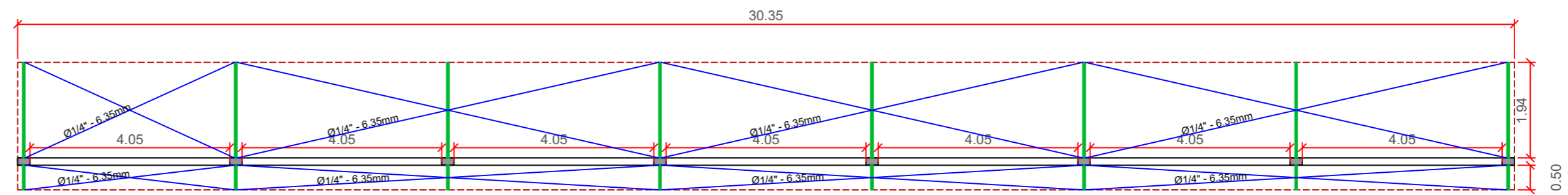
COBERTURA - ARQUIBANCADA CAMPO



OBS.: SOLDA ELETRODUTO 60x13x3.25



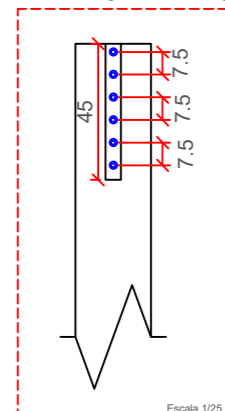
escala 1/50



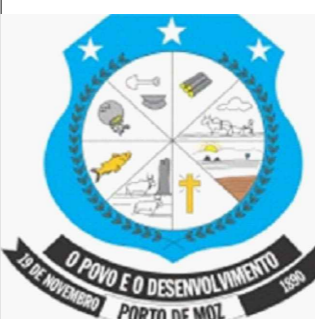
escala 1/100

COBERTURA - ARQUIBANCADA PISCINA

DETALHE LIGAÇÃO TRELIÇA-PILAR



Matheus Ben-Hur Costa Souza
Engenheiro Civil
CREA-PA 1518182939

PREFEITURA MUNICIPAL DE PORTO DE MOZ		
	TÍTULO: AQUIBANCADAS - CENTRO POLIESPORTIVO - METÁLICO	
	ASSUNTO: DETALHAMENTO DA COBERTURA DAS ARQUIBANCADAS DO CAMPO E DA PISCINA	
DATA: 07/01/2021	ESCALA: INDICADA	LOCAL: TRAV. DUQUE DE CAXIAS, 330, CABANAGEM, PORTO DE MOZ
RESPONSÁVEL TÉCNICO: MATHEUS BEN-HUR COSTA SOUZA, CREA-PA 1518182939		FOLHA: MET 01/01
		REVISÃO: 00