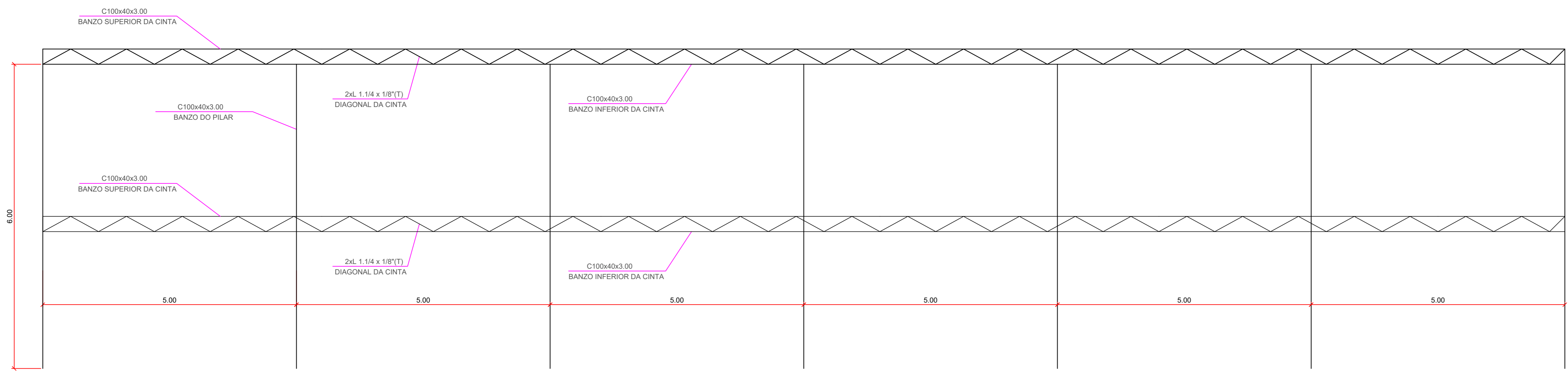
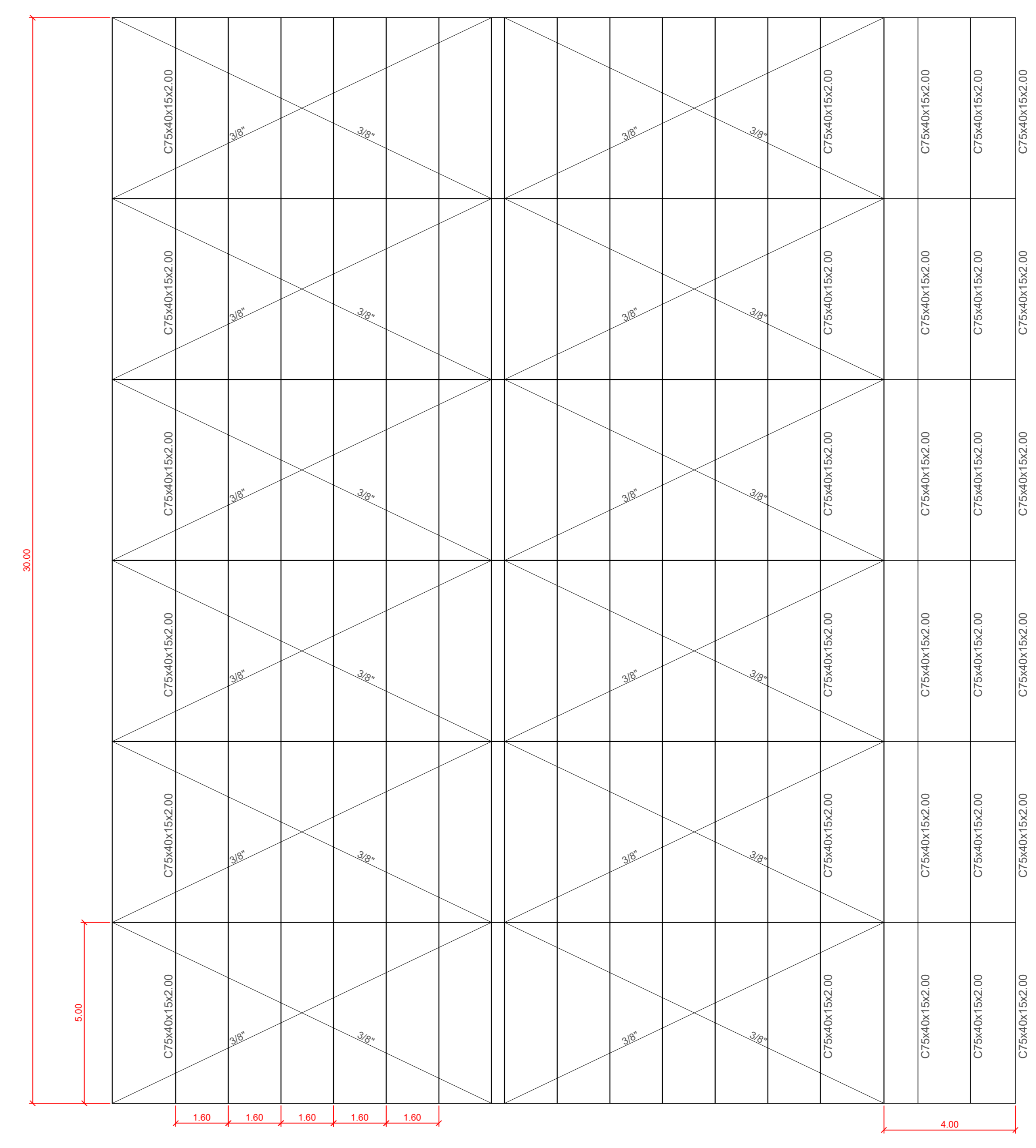


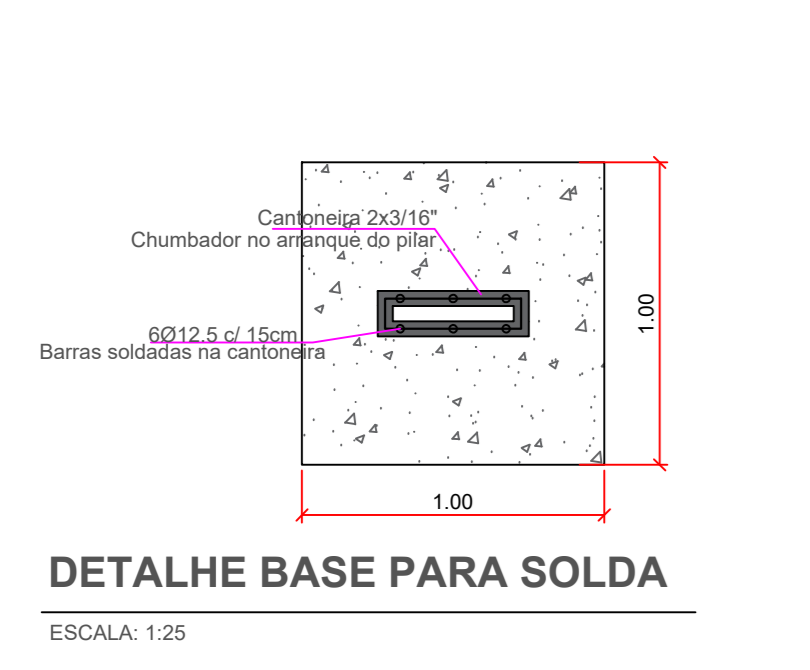
DETALHAMENTO DO PÓRTICO
ESCALA: 1:50



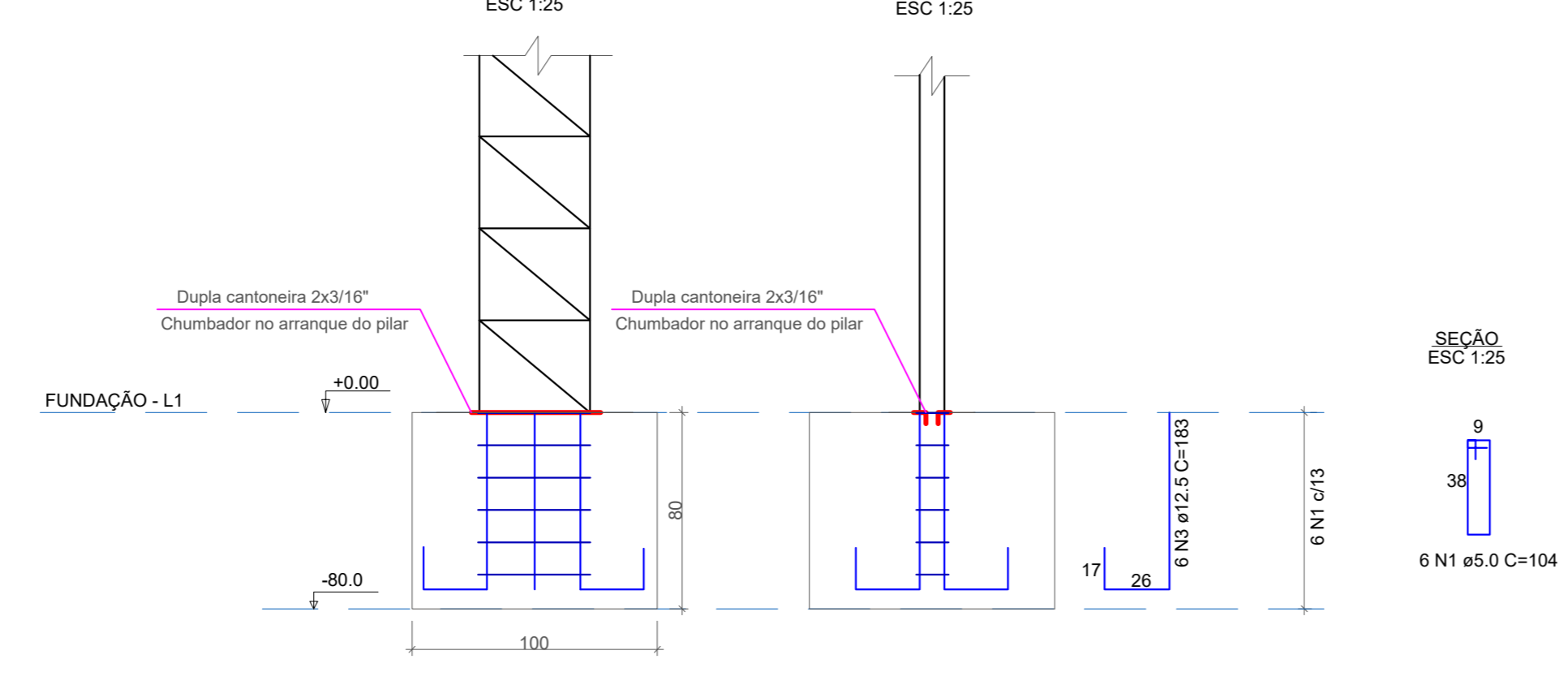
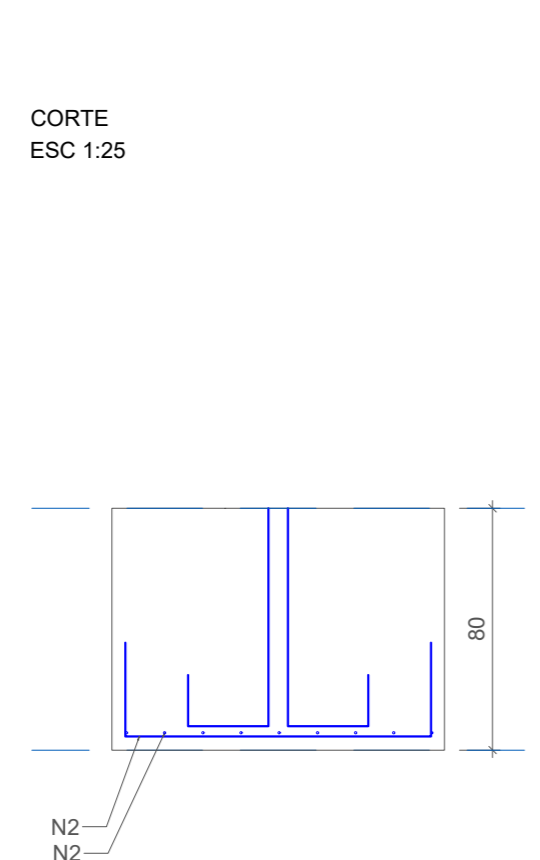
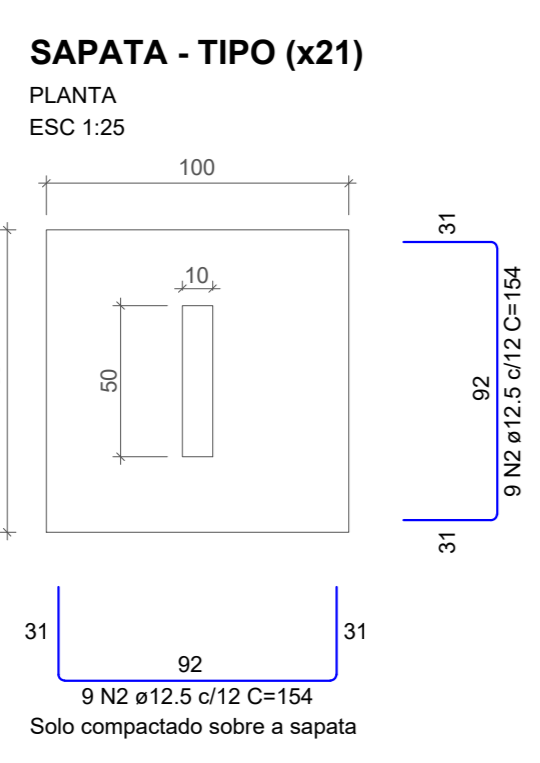
LATERAL (SIMÉTRICA)
ESCALA: 1:50



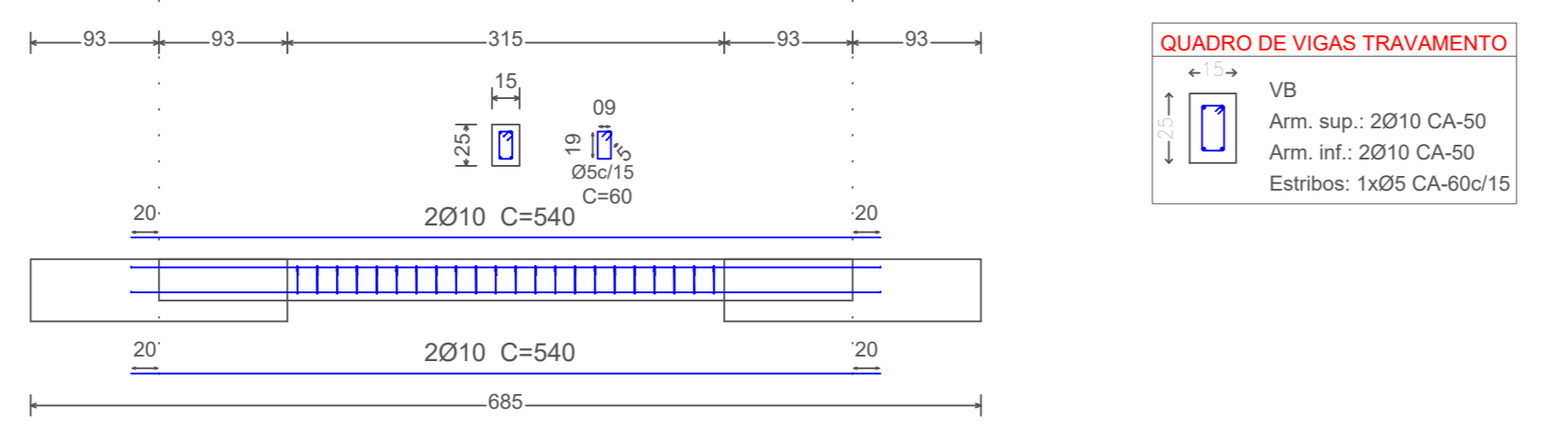
COBERTURA
ESCALA: 1:100



DETALHE BASE PARA SOLDA
ESCALA: 1:25



VIGA TIPO
ESCALA: 1:50



QUADRO DE VIGAS TRAVAMENTO
VB
Arm. sup.: 2Ø10 CA-50
Arm. inf.: 2Ø10 CA-50
Estribos: 1xØ5 CA-60x15

AÇO	N	DIAM (mm)	QUANT	C.UNIT (cm)	C.TOTAL (cm)
CA60	1	5.0	252	104	26208
CA50	2	12.5	378	154	58212
CA50	3	12.5	252	103	46116

RESUMO DO AÇO BLOCOS

AÇO	DIAM (mm)	C.TOTAL (m)	PESO + 10% (kg)
CA50	12.5	1043.28	1105.15
CA60	5.0	262.08	44.40
PESO TOTAL (kg)			1105.15
CA50			1105.15
CA60			44.40

Volume de concreto (C-25) = 16.8 m³