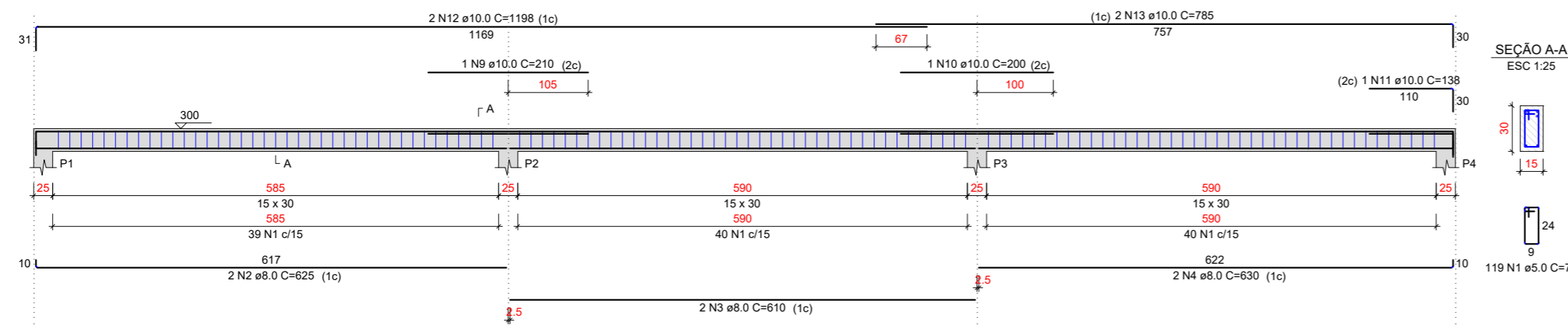
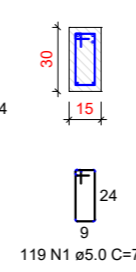


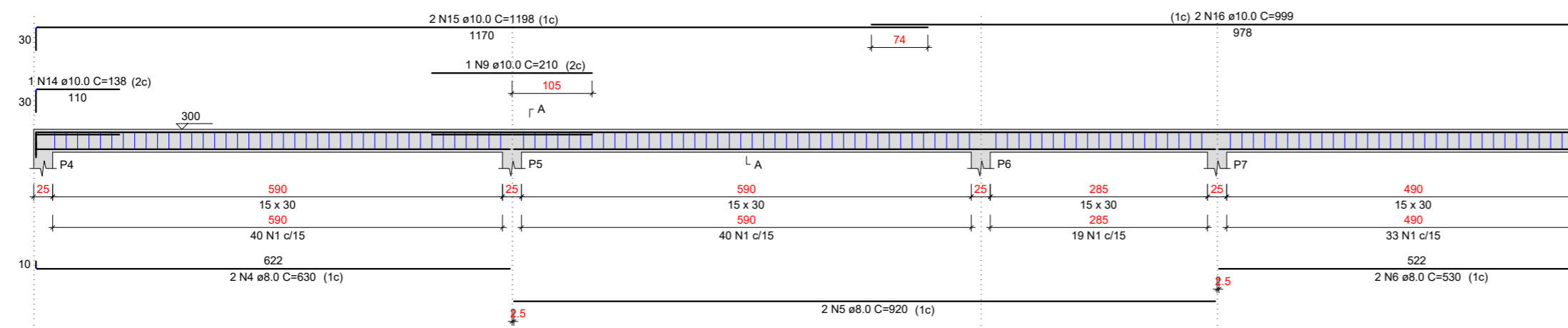
V1  
ESC 1:50



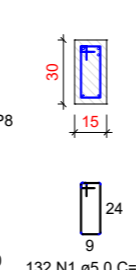
SEÇÃO A-A  
ESC 1:25



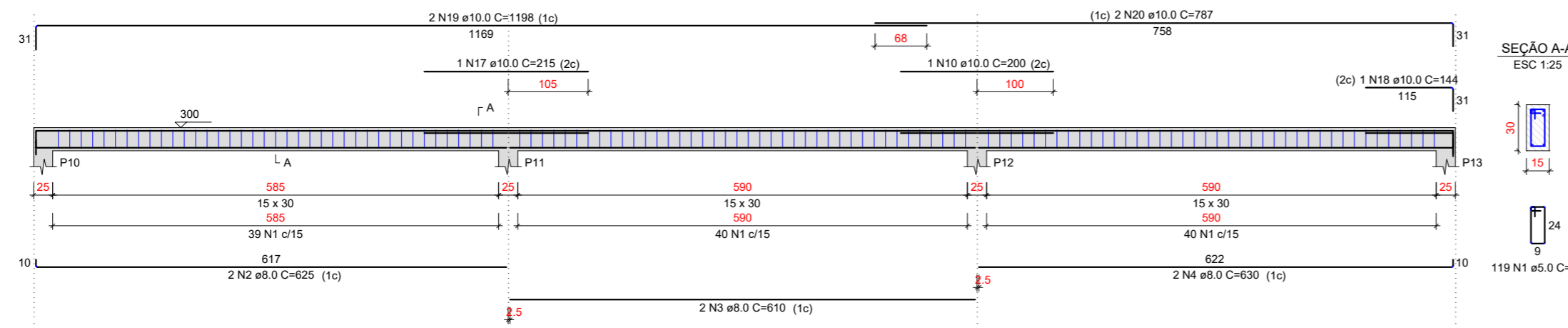
V2  
ESC 1:50



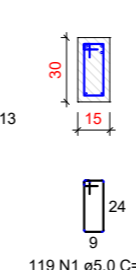
SEÇÃO A-A  
ESC 1:25



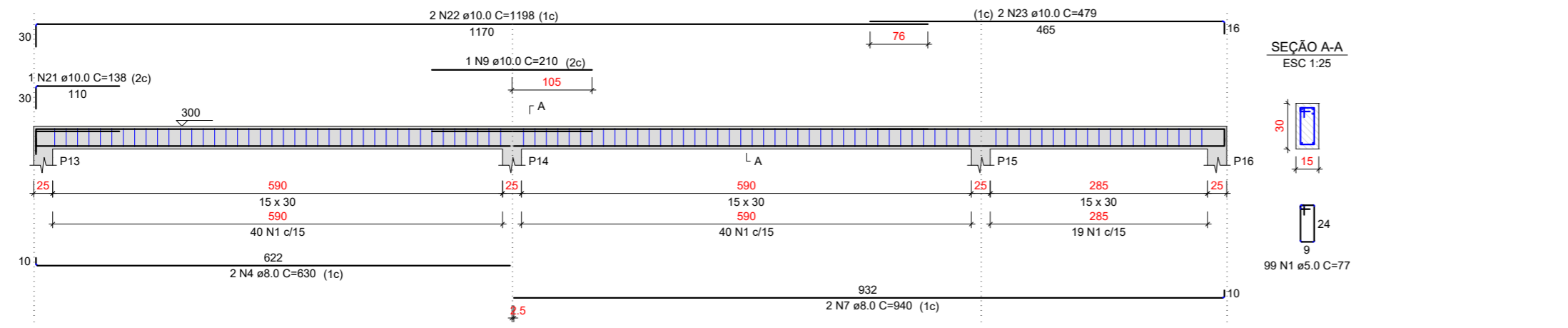
V3  
ESC 1:50



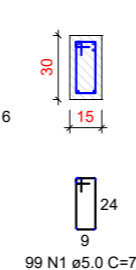
SEÇÃO A-A  
ESC 1:25



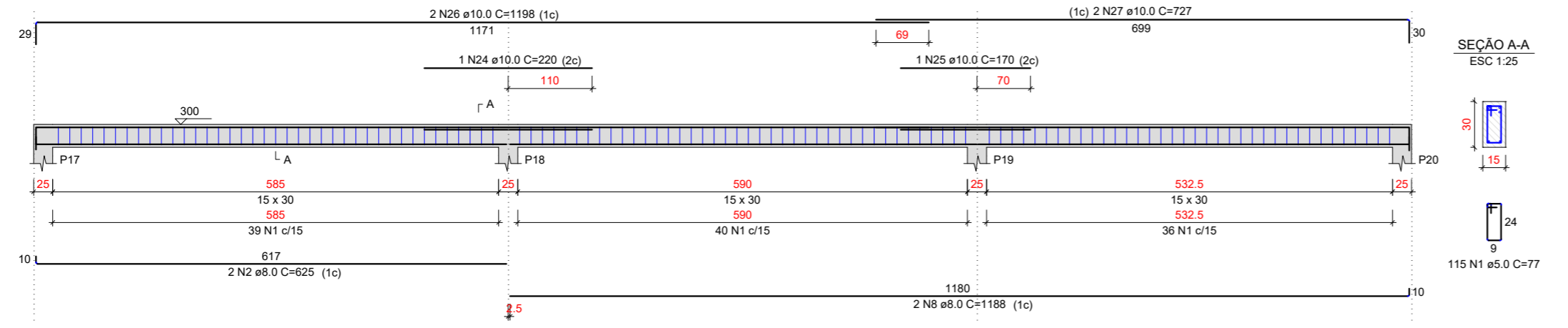
V4  
ESC 1:50



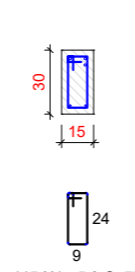
SEÇÃO A-A  
ESC 1:25



V5  
ESC 1:50



SEÇÃO A-A  
ESC 1:25



RELAÇÃO DO AÇO

AÇO	N	DIAM (mm)	QUANT	C.UNIT (cm)	C.TOTAL (cm)
CA80	1	5.0	77	77	44968
CA80	2	8.0	6	625	3750
CA80	3	8.0	4	610	2440
CA80	4	8.0	8	630	5040
CA80	5	8.0	2	920	1840
CA80	6	8.0	2	530	1060
CA80	7	8.0	2	940	1880
CA80	8	8.0	2	1188	2376
CA80	9	10.0	3	210	630
CA80	10	10.0	2	200	400
CA80	11	10.0	1	138	138
CA80	12	10.0	2	1198	2396
CA80	13	10.0	2	785	1570
CA80	14	10.0	1	138	138
CA80	15	10.0	2	1198	2396
CA80	16	10.0	2	999	1998
CA80	17	10.0	1	215	215
CA80	18	10.0	1	144	144
CA80	19	10.0	2	1198	2396
CA80	20	10.0	2	787	1574
CA80	21	10.0	1	138	138
CA80	22	10.0	2	1198	2396
CA80	23	10.0	2	479	958
CA80	24	10.0	1	220	220
CA80	25	10.0	1	170	170
CA80	26	10.0	2	1198	2396
CA80	27	10.0	2	727	1454

RESUMO DO AÇO

AÇO	DIAM (mm)	C.TOTAL (m)	PESO + 0% (kg)
CA80	8.0	183.9	72.5
CA80	10.0	217.3	134
CA80	5.0	449.7	69.3
<b>PESO TOTAL (kg)</b>			
CA80			206.5
CA80			69.3

Volume de concreto (C-25) = 3.90 m³  
Área de forma = 68.87 m²

**PREFEITURA MUNICIPAL DE PORTO DE MOZ**

TÍTULO: ESCOLA POLO COM 5 SALAS DE AULA

ASSUNTO: VIGA DE COBERTURA

DATA: 09/06/2022 INDICADA

LOCAL: VILA NOVA-GUAJARA ZONA RURAL DO MUNICIPIO DE PORTO DE MOZ

RESPONSÁVEL TÉCNICO: MATHEUS BEN-HUR COSTA SOUZA, CREA-PA 1518192939  
BRUNO VIANA PAMPLONA, CREA-PA 16949D

EST 5/7

REVISÃO: 00

PRODUCED BY AN AUTODESK STUDENT VERSION

PRODUCED BY AN AUTODESK STUDENT VERSION