

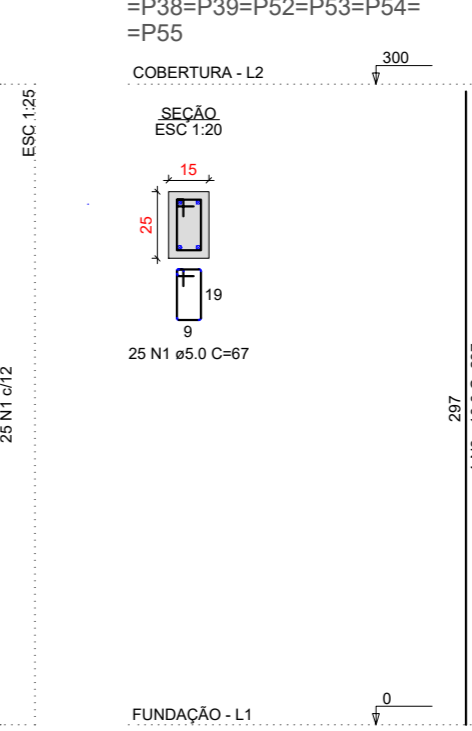
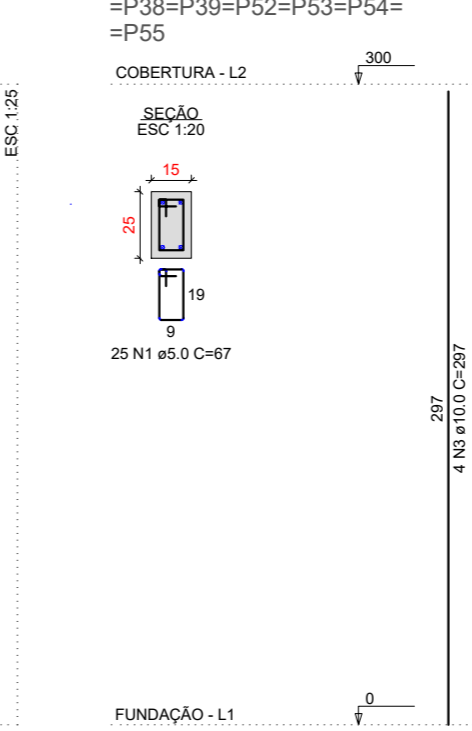
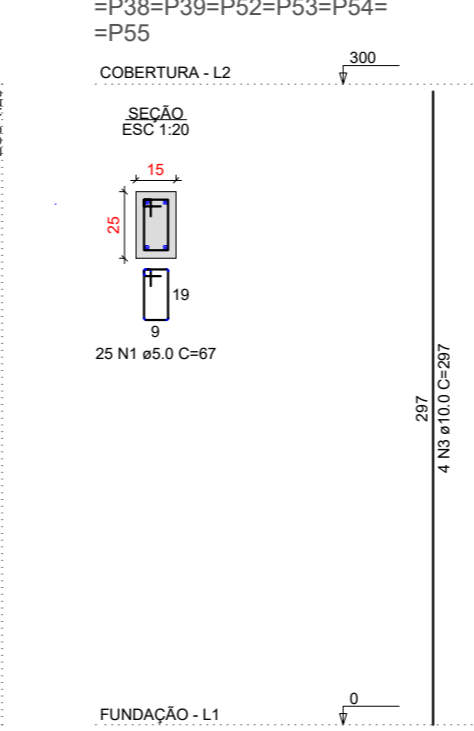
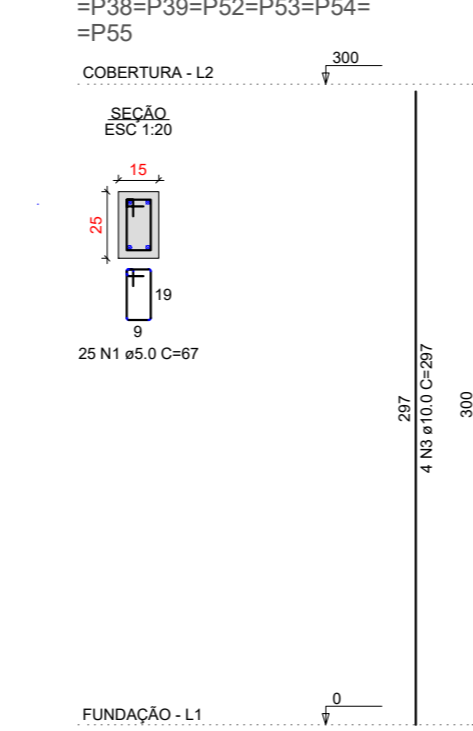
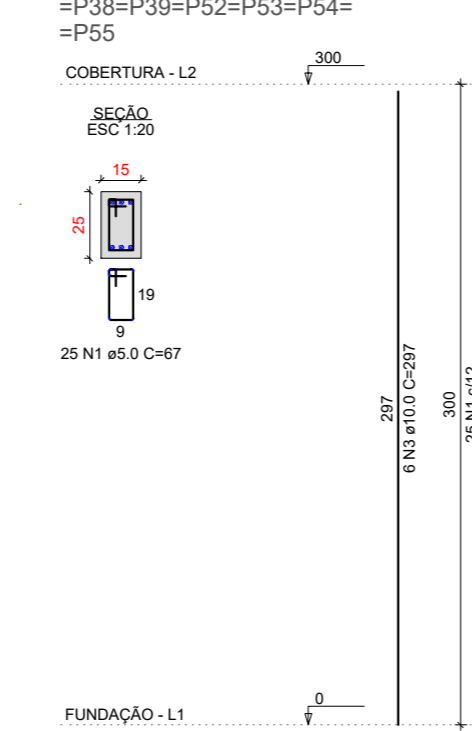
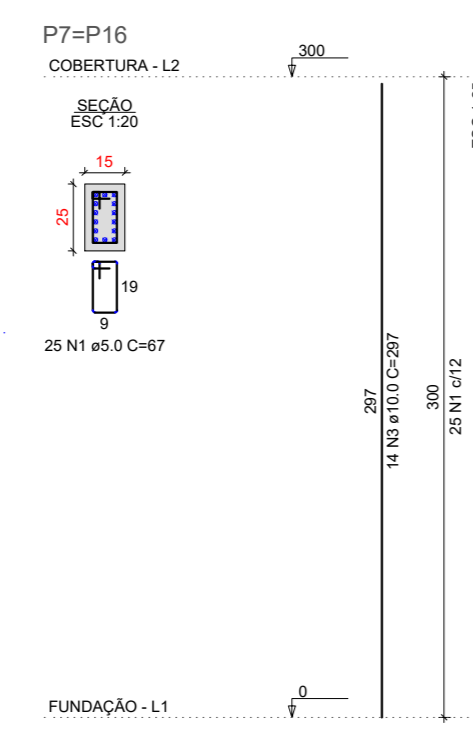
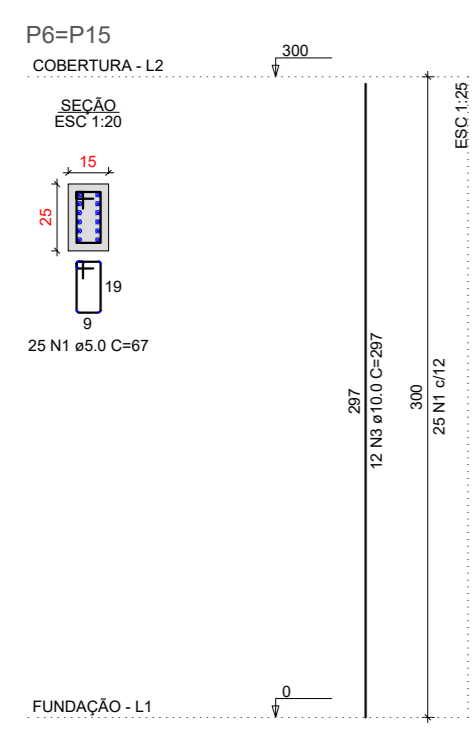
RELAÇÃO DO AÇO

AÇO	N	DIAM (mm)	QUANT	C.UNIT (cm)	C.TOTAL (cm)
CA60	1	5.0	495	67	33165
	2	5.0	25	77	1925
CA50	3	10.0	156	297	46332
	4	12.5	10	297	2970

RESUMO DO AÇO

AÇO	DIAM (mm)	C.TOTAL (m)	PESO + 0% (kg)
CA50	10.0	463.3	285.7
CA60	5.0	350.9	54.1
PESO TOTAL (kg)			339.8
CA50		314.3	
CA60		54.1	

Volume de concreto (C-25) = 2.40 m³
Área de forma = 50.70 m²



PREFEITURA MUNICIPAL DE PORTO DE MOZ

TÍTULO: ESCOLA POLO COM 5 SALAS DE AULA

ASSUNTO: PILARES

DATA: 09/06/2022 INDICADA

LOCAL: VILA NOVA-GUAJARA ZONA RURAL DO MUNICÍPIO DE PORTO DE MOZ

RESPONSÁVEL TÉCNICO: MATEUS BEN-HUR COSTA SOUZA, CREA-PA 1518192939
BRUNO VIANA PAMPLONA, CREA-PA 16949D

EST 1/7

REVISÃO: 00