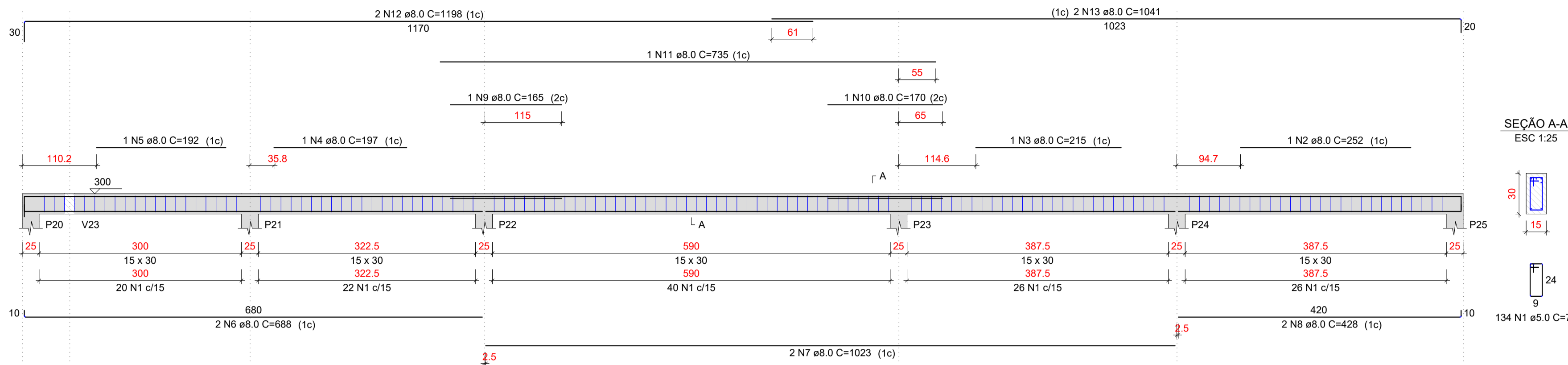
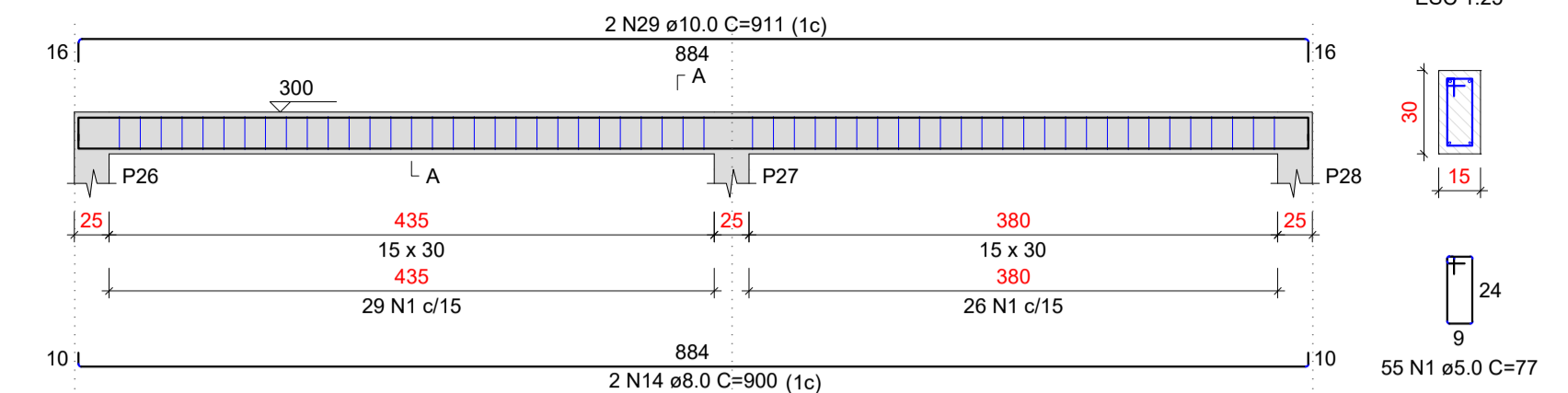


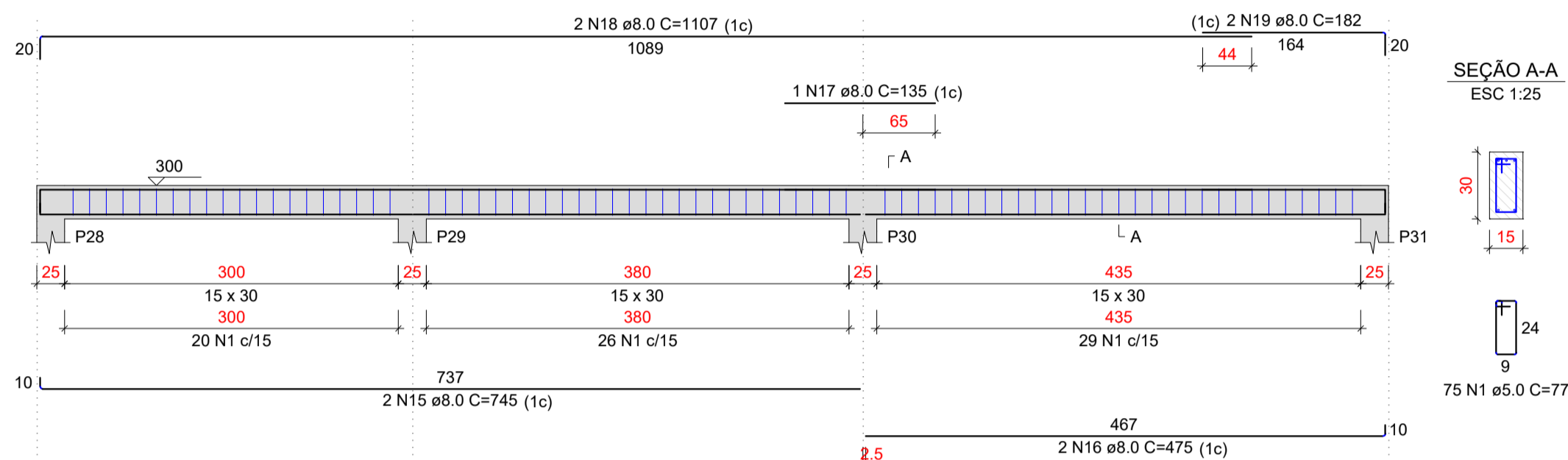
V6 ESC 1:50



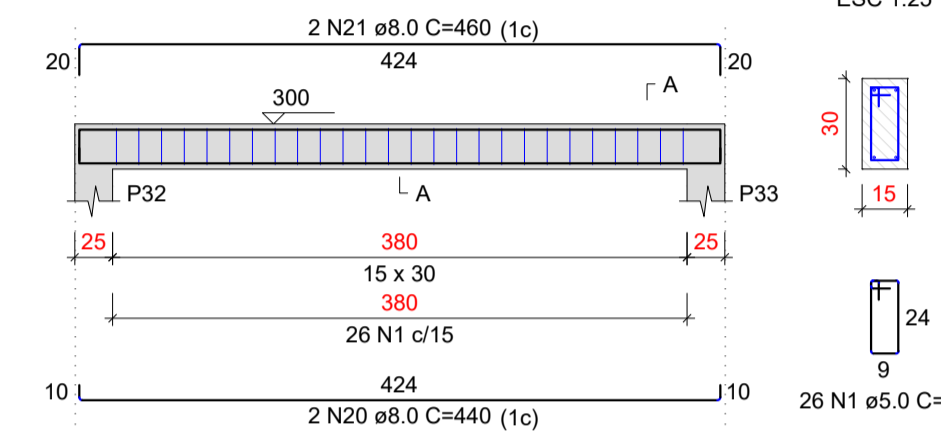
V7 ESC 1:50



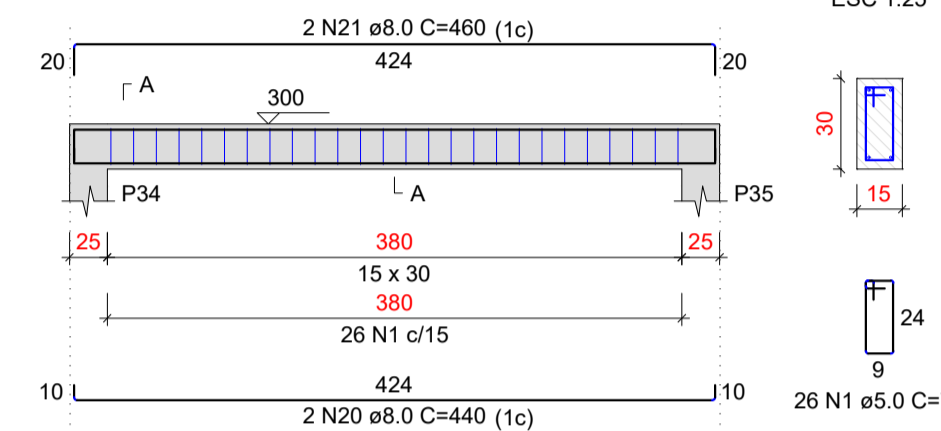
V8 ESC 1:50



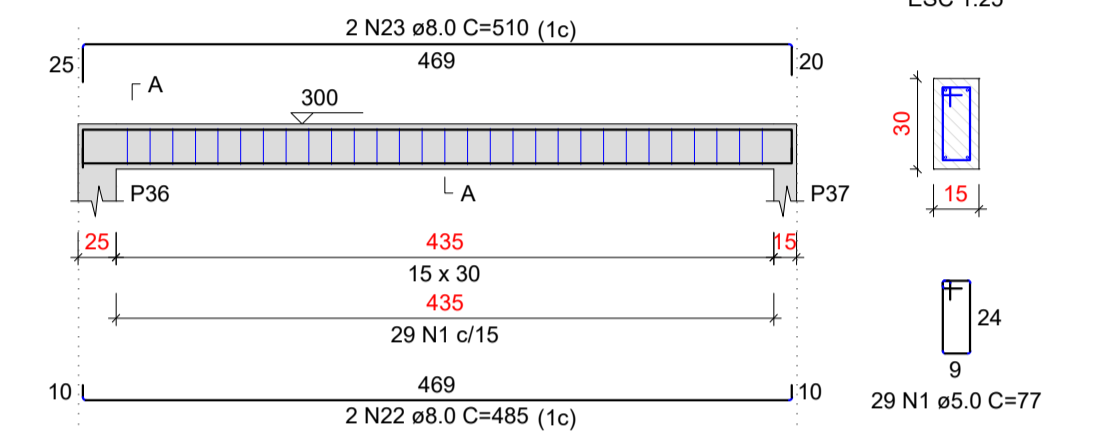
V9 ESC 1:50



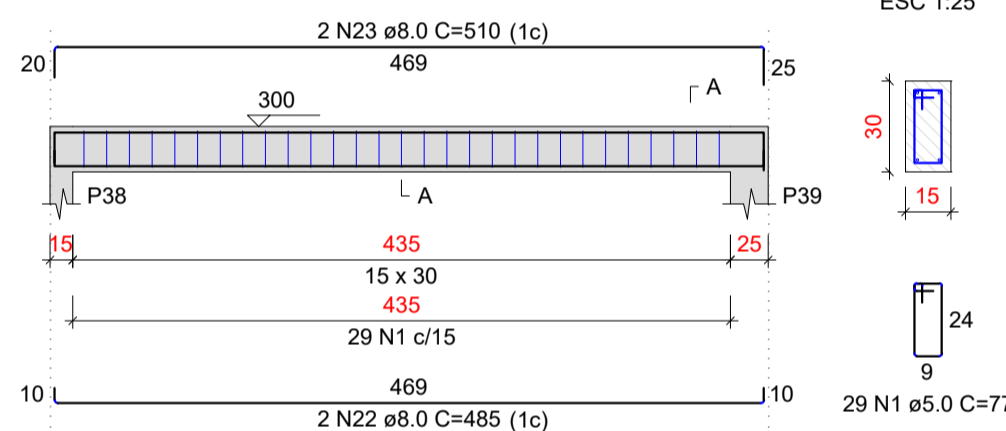
V10 ESC 1:50



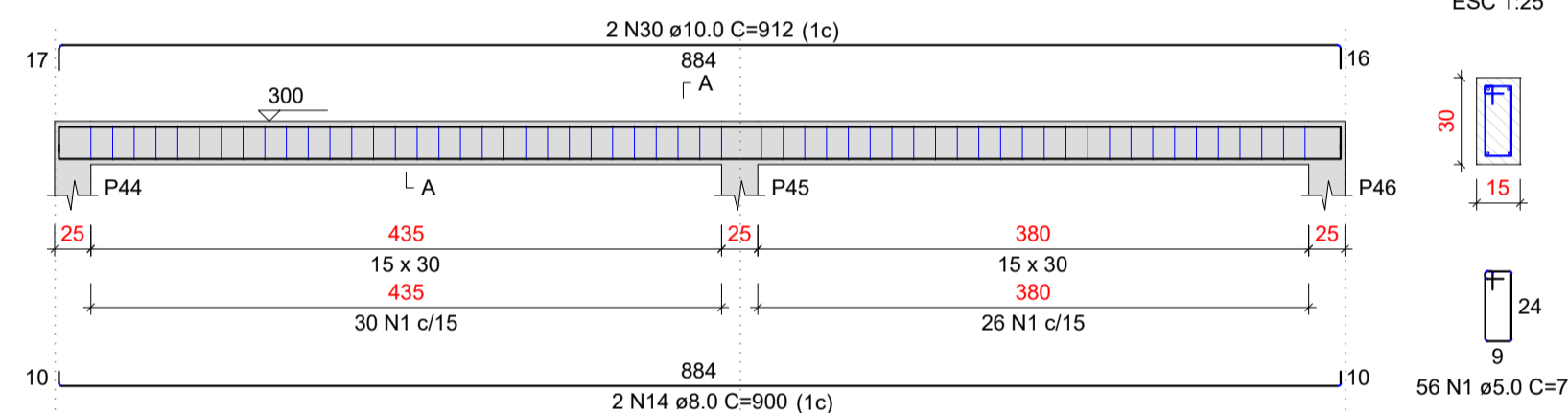
V11 ESC 1:50



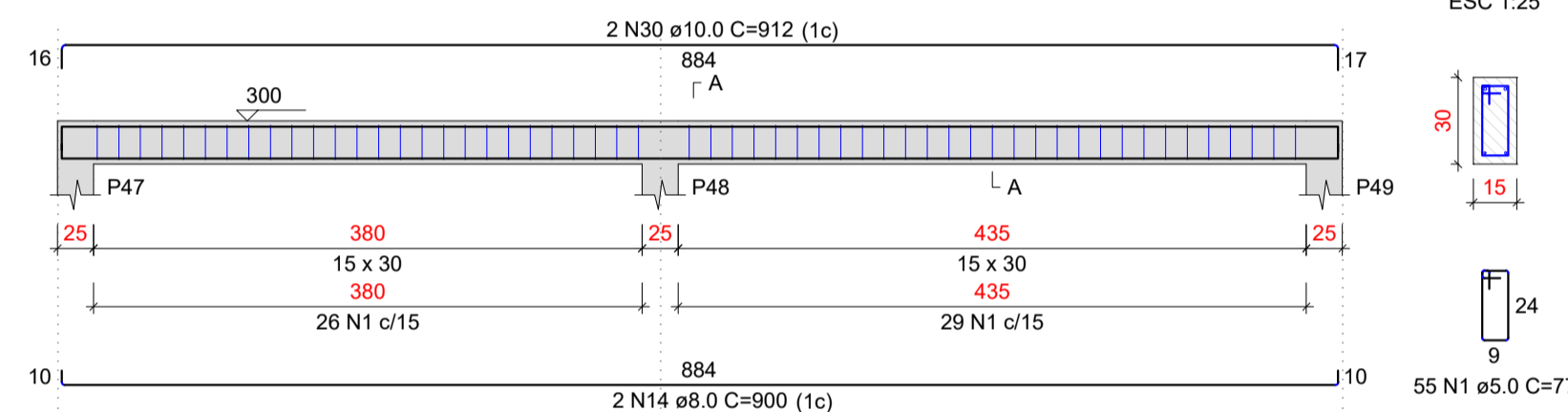
V12 ESC 1:50



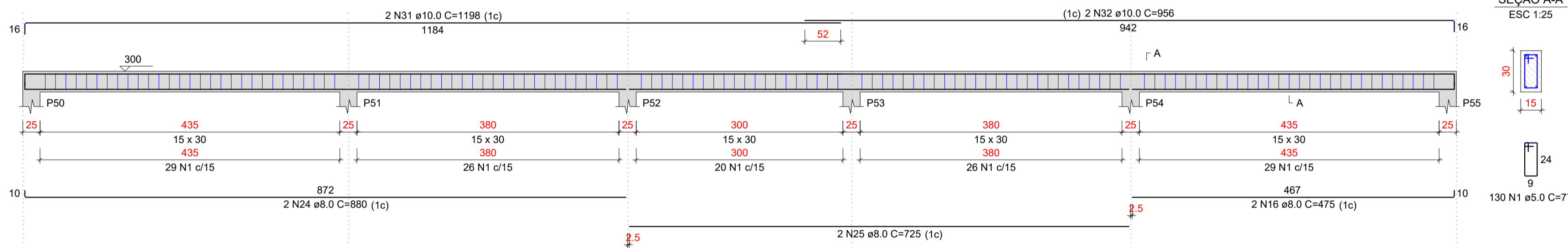
V13 ESC 1:50



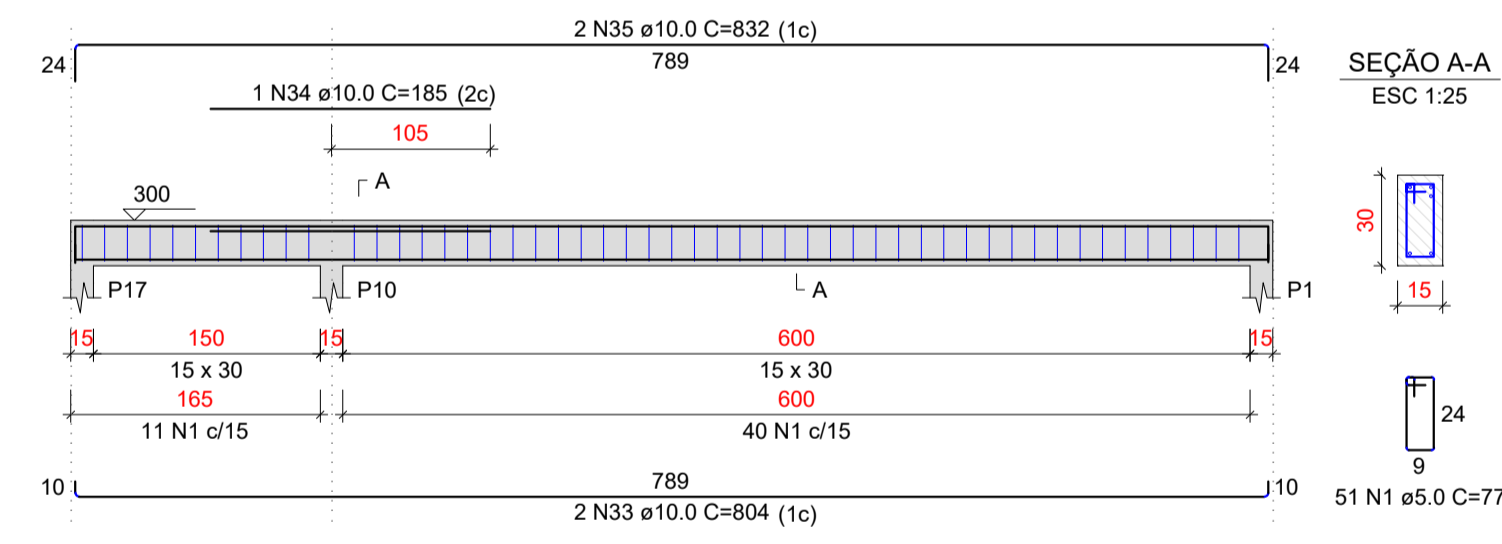
V14 ESC 1:50



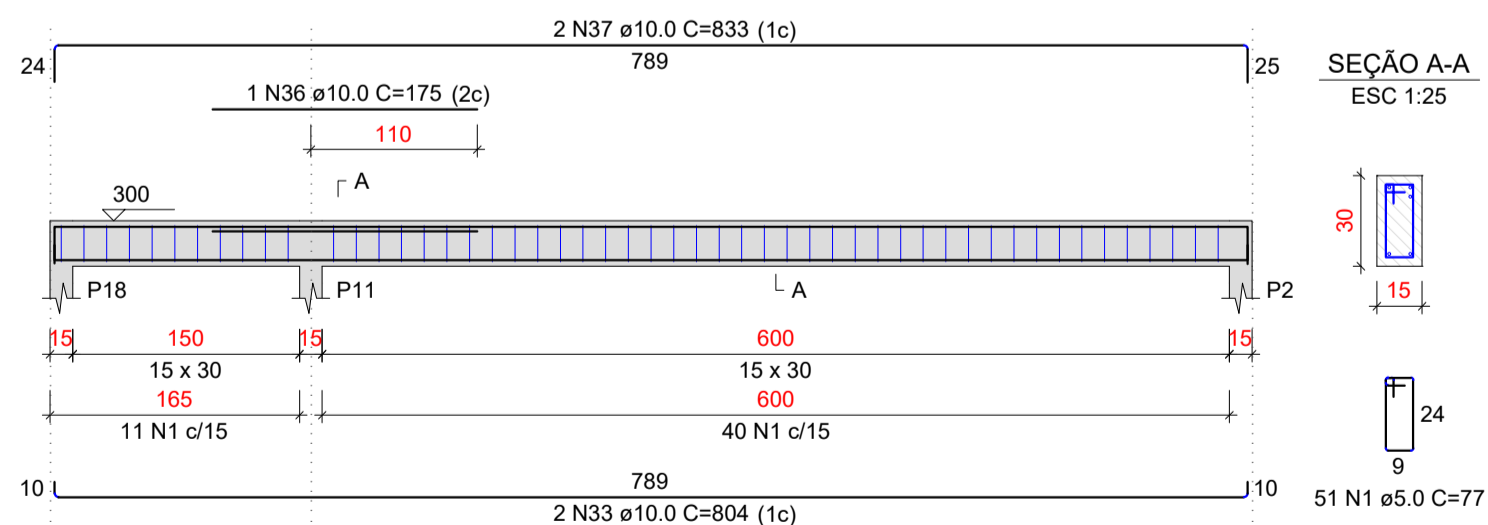
V15 ESC 1:50



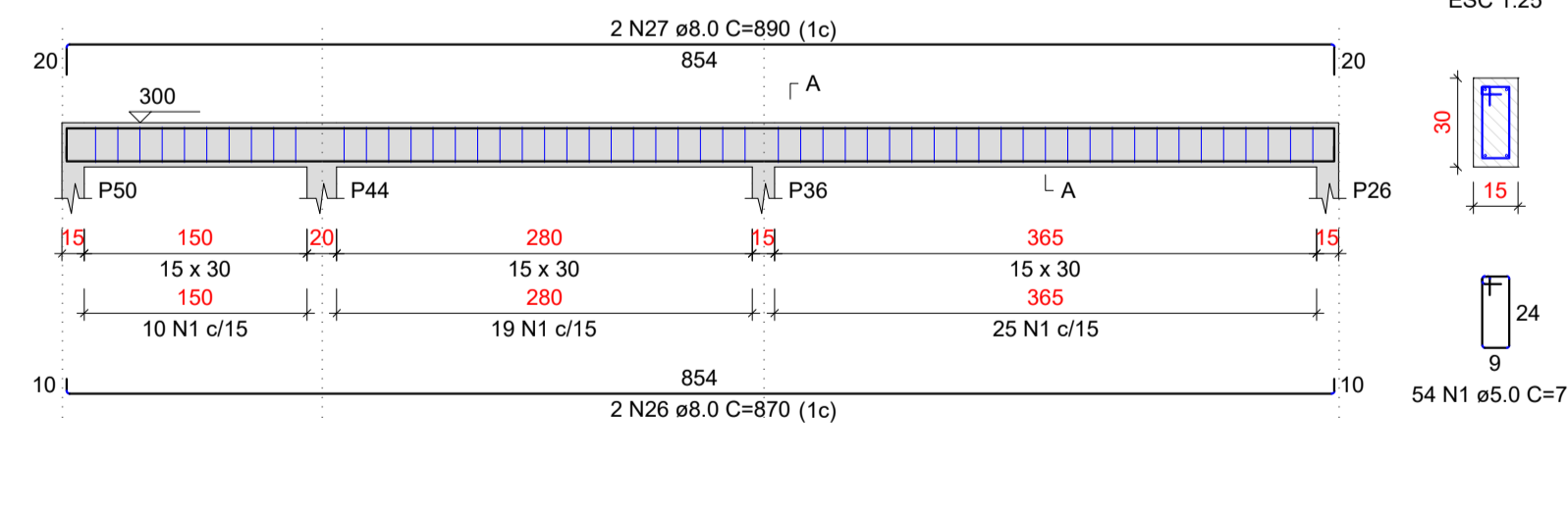
V16 ESC 1:50



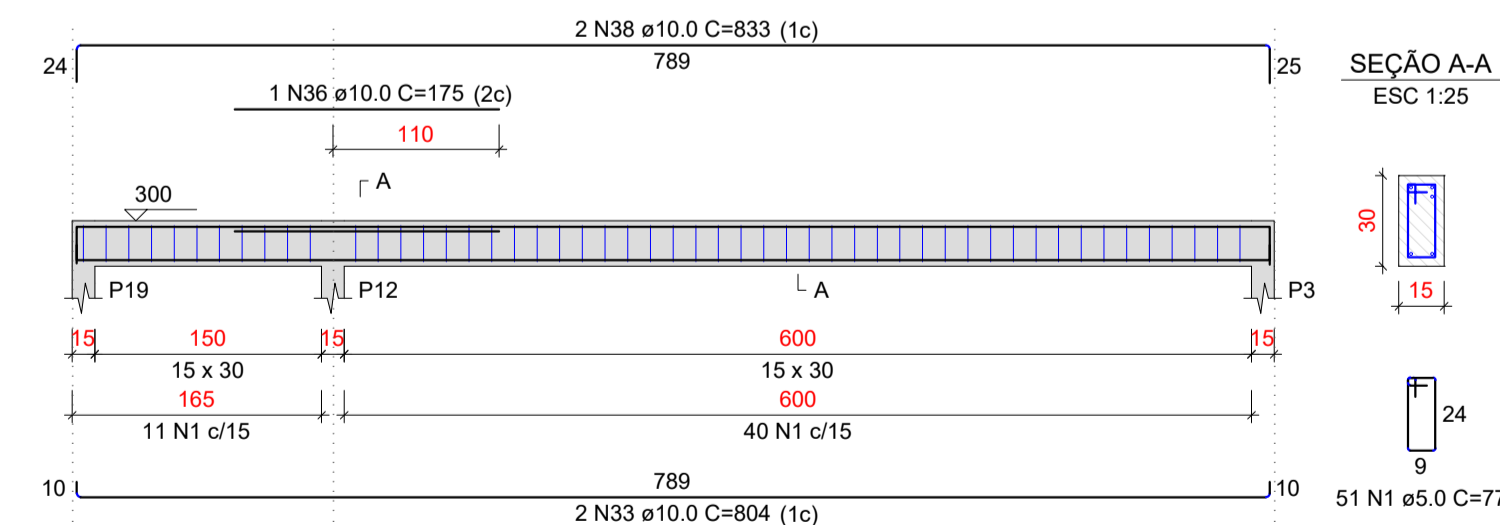
V17 ESC 1:50



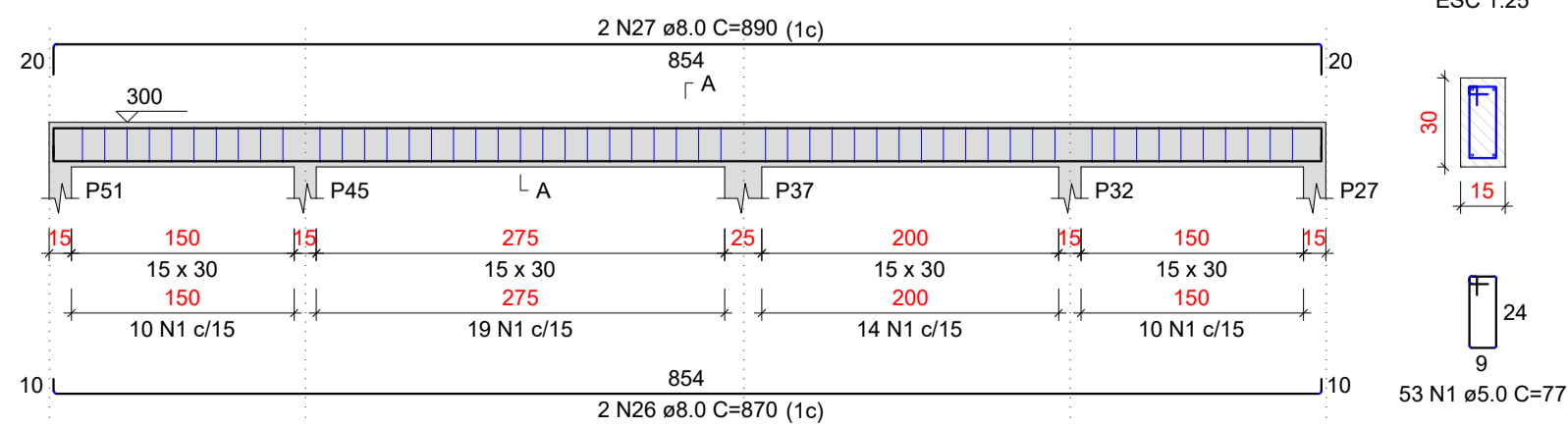
V18 ESC 1:50



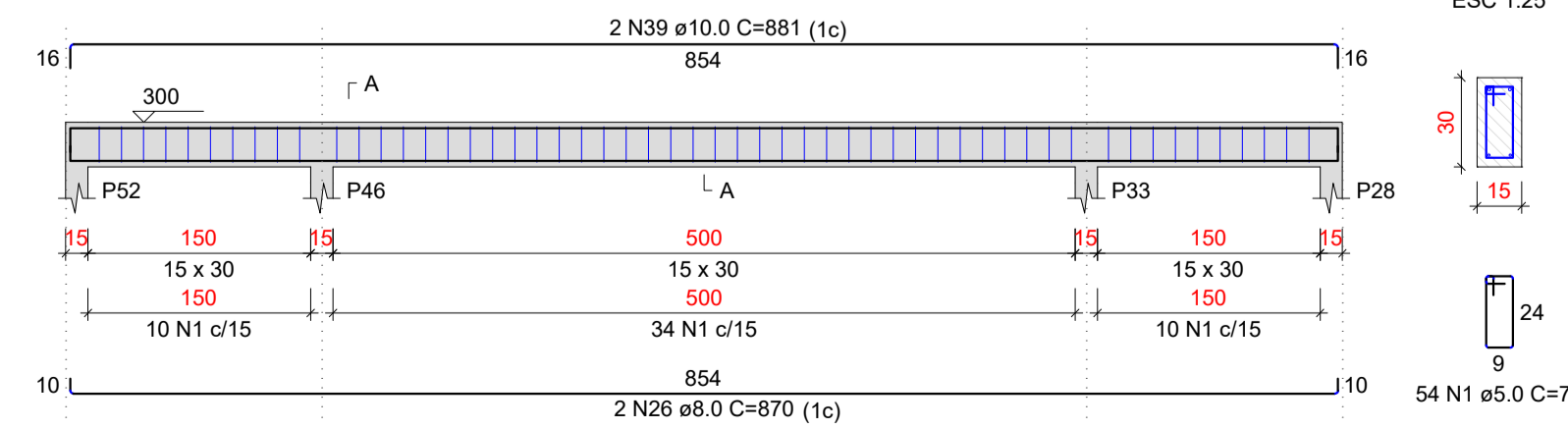
V19 ESC 1:50



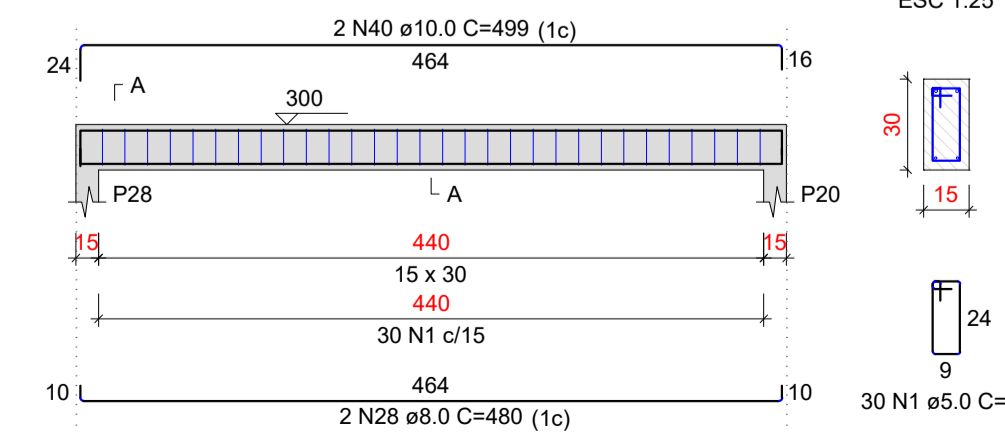
V20 ESC 1:50



V21 ESC 1:50



V22 ESC 1:50



RELAÇÃO DO AÇO

AÇO	N	DIAM (mm)	QUANT	C.UNIT (cm)	C.TOTAL (cm)
CA60	1	5.0	959	77	73843
CA50	2	8.0	1	252	252
	3	8.0	1	215	215
	4	8.0	1	197	197
	5	8.0	1	192	192
	6	8.0	2	888	1376
	7	8.0	2	1023	2046
	8	8.0	2	428	856
	9	8.0	1	165	165
	10	8.0	1	170	170
	11	8.0	1	735	735
	12	8.0	2	1198	2396
	13	8.0	2	1041	2082
	14	8.0	6	800	5400
	15	8.0	2	745	1490
	16	8.0	4	475	1900
	17	8.0	1	135	135
	18	8.0	2	1107	2214
	19	8.0	2	182	364
	20	8.0	4	440	1760
	21	8.0	4	460	1840
	22	8.0	4	485	1940
	23	8.0	4	510	2040
	24	8.0	2	890	1780
	25	8.0	2	725	1450
	26	8.0	6	870	5220
	27	8.0	4	890	3560
	28	8.0	2	480	960
	29	10.0	2	911	1822
	30	10.0	4	912	3648
	31	10.0	2	1198	2396
	32	10.0	2	956	1912
	33	10.0	6	804	4824
	34	10.0	1	185	185
	35	10.0	2	832	1664
	36	10.0	2	175	350
	37	10.0	2	833	1666
	38	10.0	2	833	1666
	39	10.0	2	881	1762
	40	10.0	2	499	998

RESUMO DO AÇO

AÇO	DIAM (mm)	C.TOTAL (m)	PESO + 0% (kg)
CA50	8.0	427.2	168.5
CA60	10.0	228.9	141.1
CA60	5.0	738.4	113.8
PESO TOTAL (kg)			
CA50		309.7	
CA60		113.8	

Volume de concreto (C-25) = 6.38 m³
Área de forma = 115.11 m²

PREFEITURA MUNICIPAL DE PORTO DE MOZ

TÍTULO: ESCOLA POLO COM 5 SALAS DE AULA

ASSUNTO: VIGA DE COBERTURA

DATA: 09/06/2022 INDICADA

RESPONSÁVEL TÉCNICO: MATHEUS BEN-HUR COSTA SOUZA, CREA-PA 1518192939
BRUNO VIANA PAMPLONA, CREA-PA 16949D

EST 6/7

REVISÃO: 00