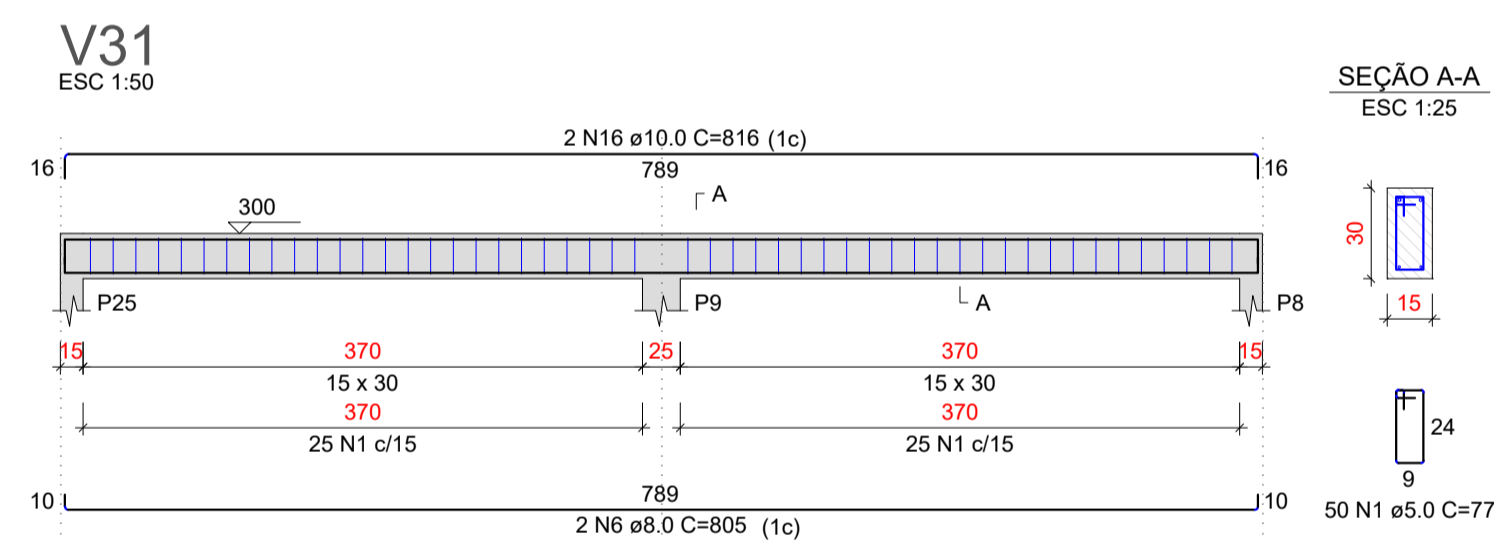
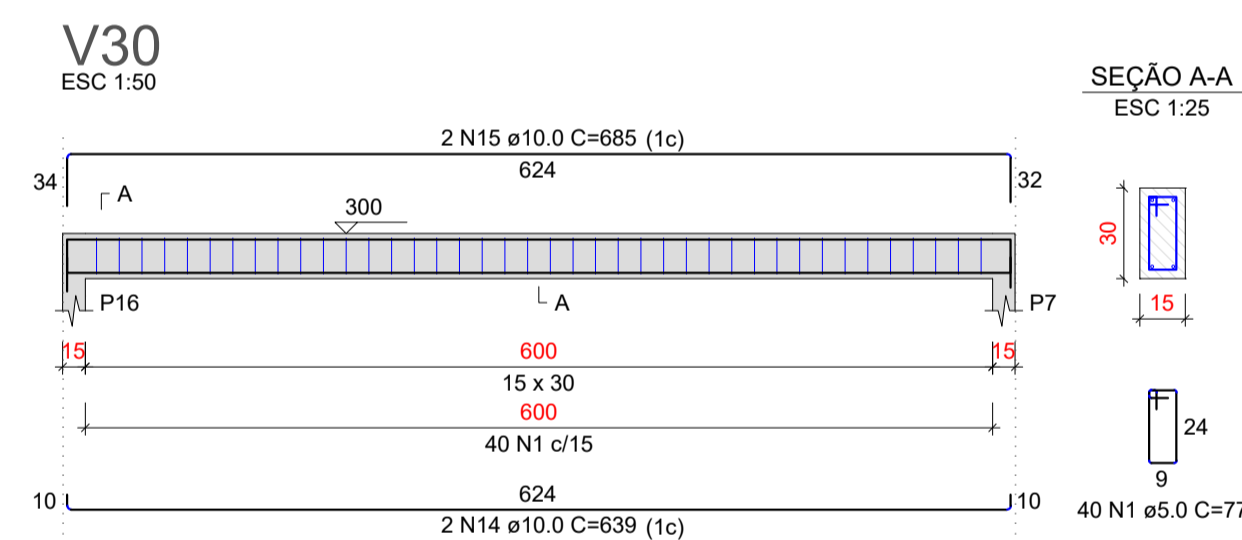
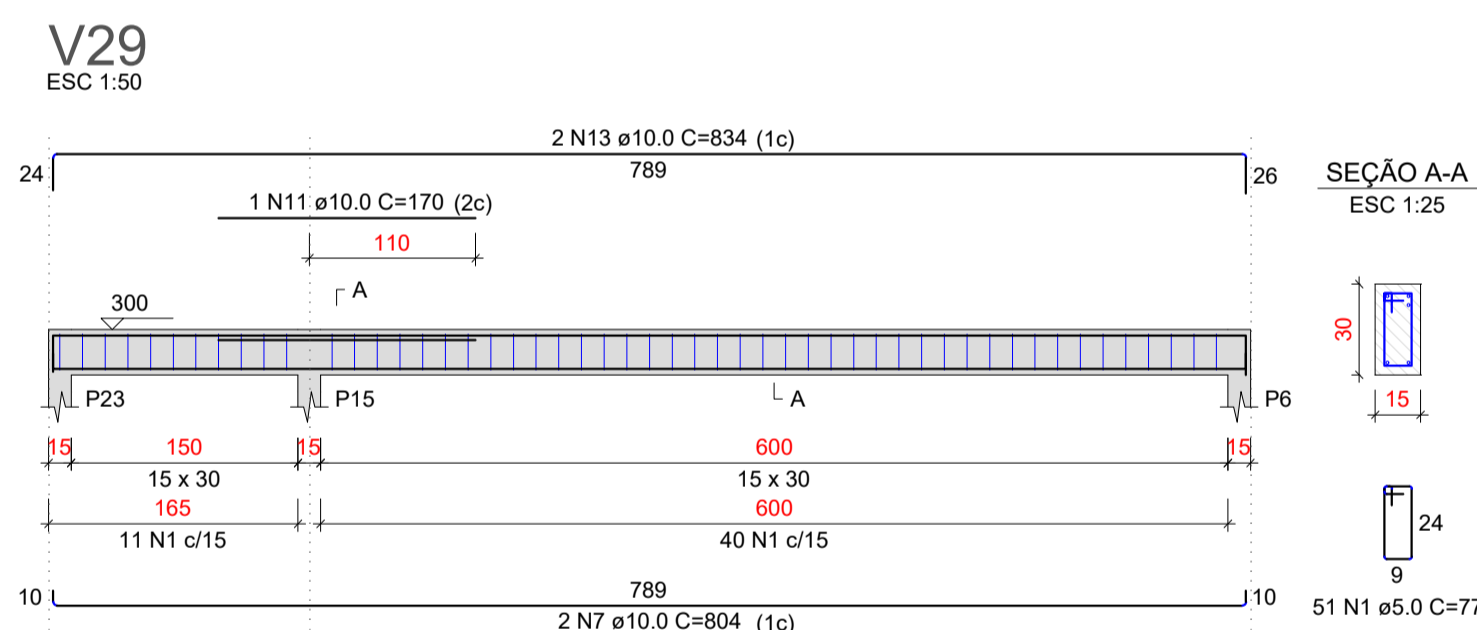
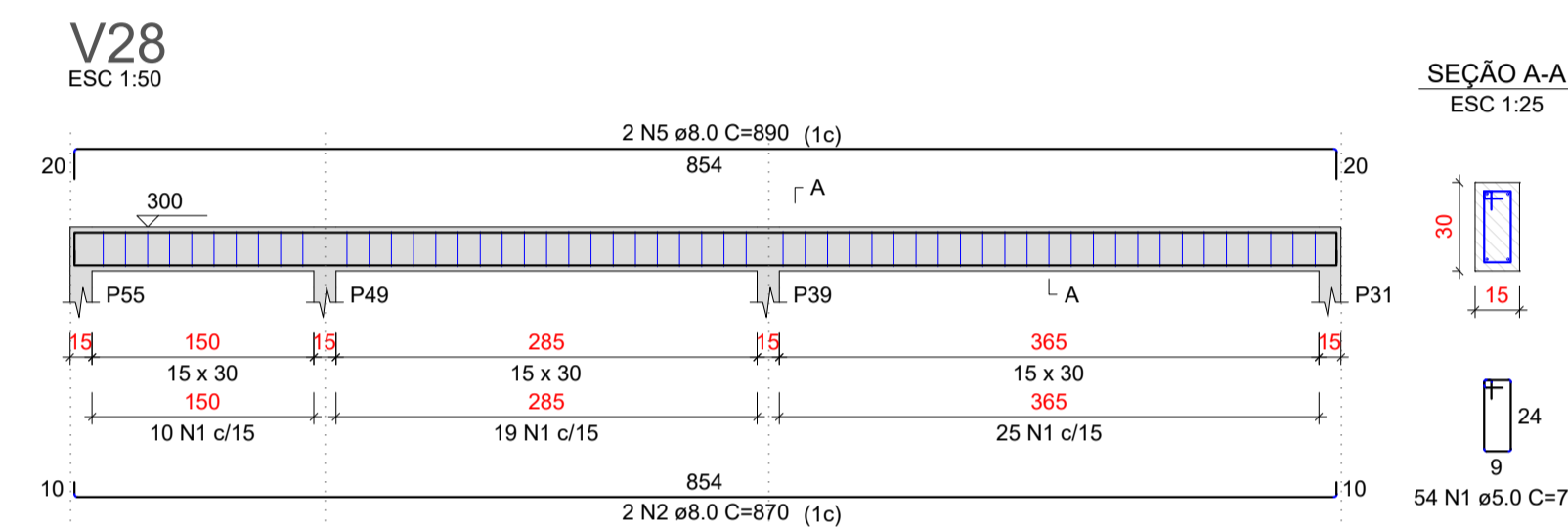
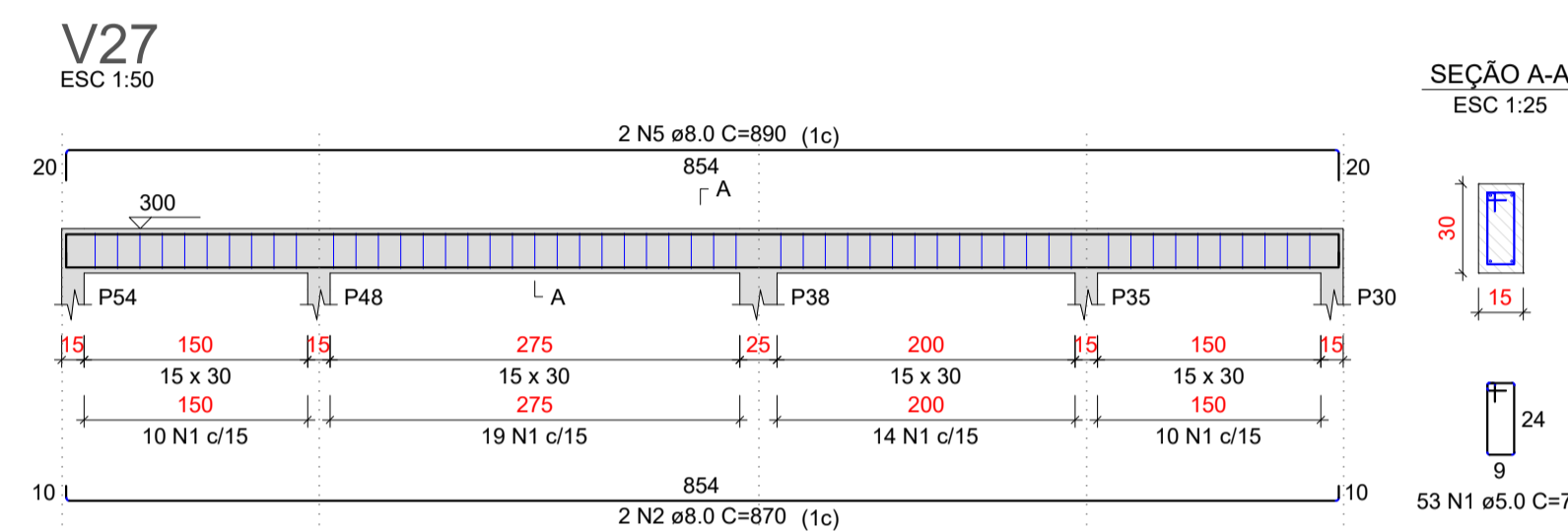
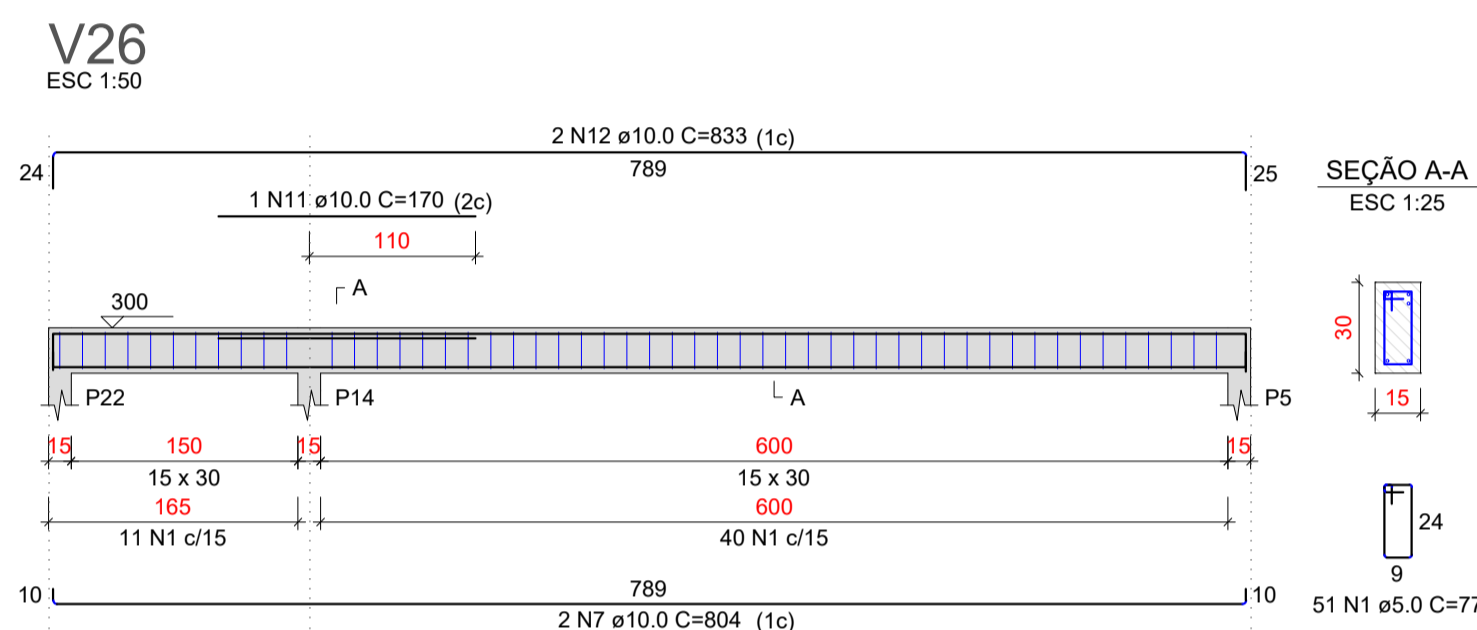
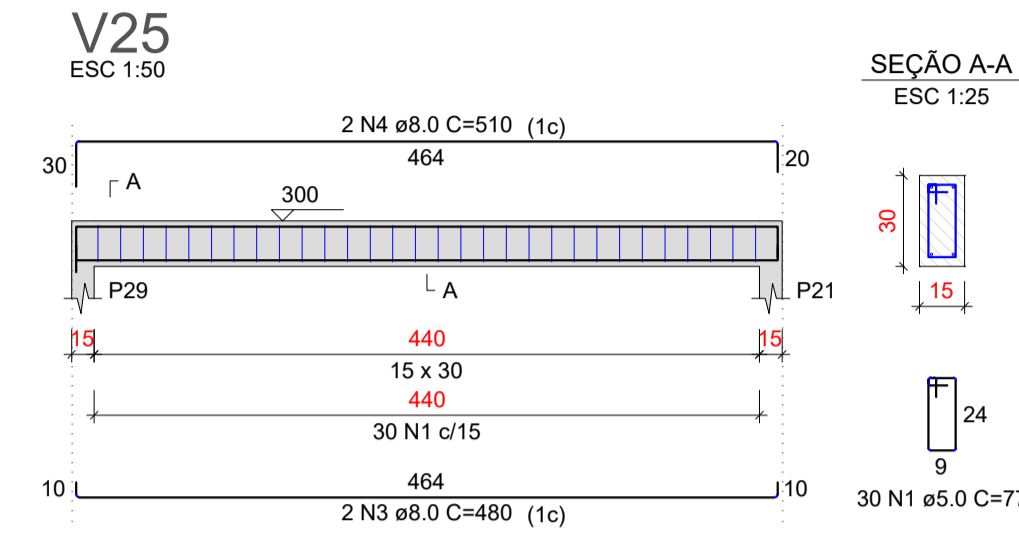
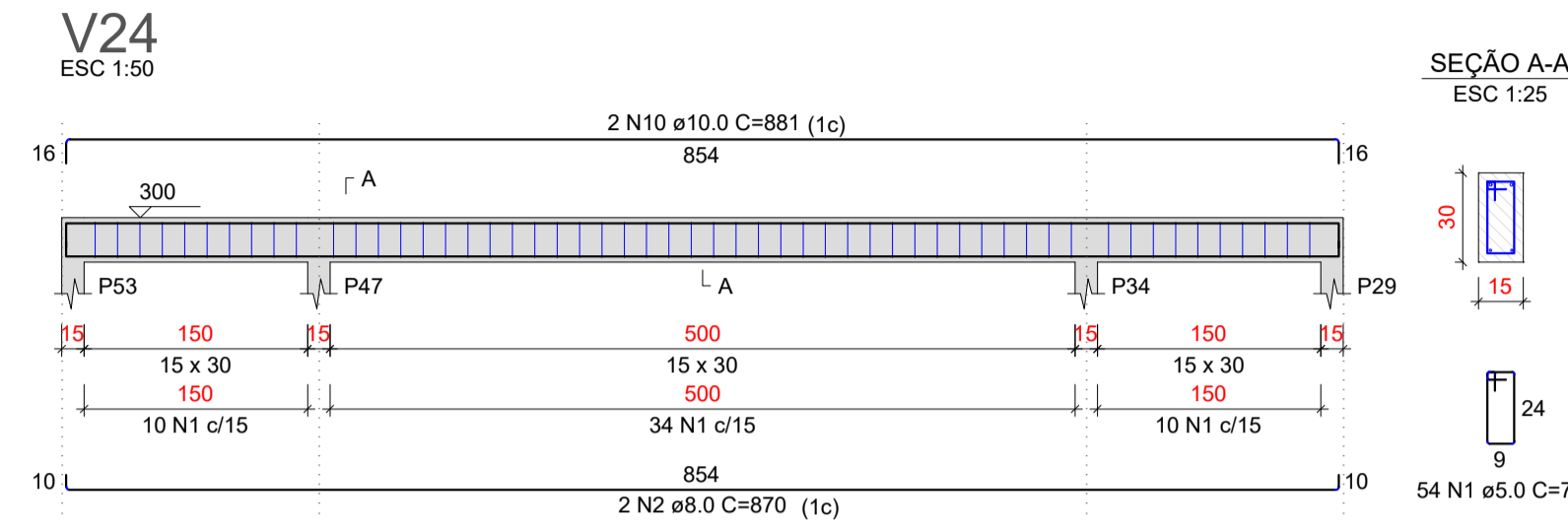
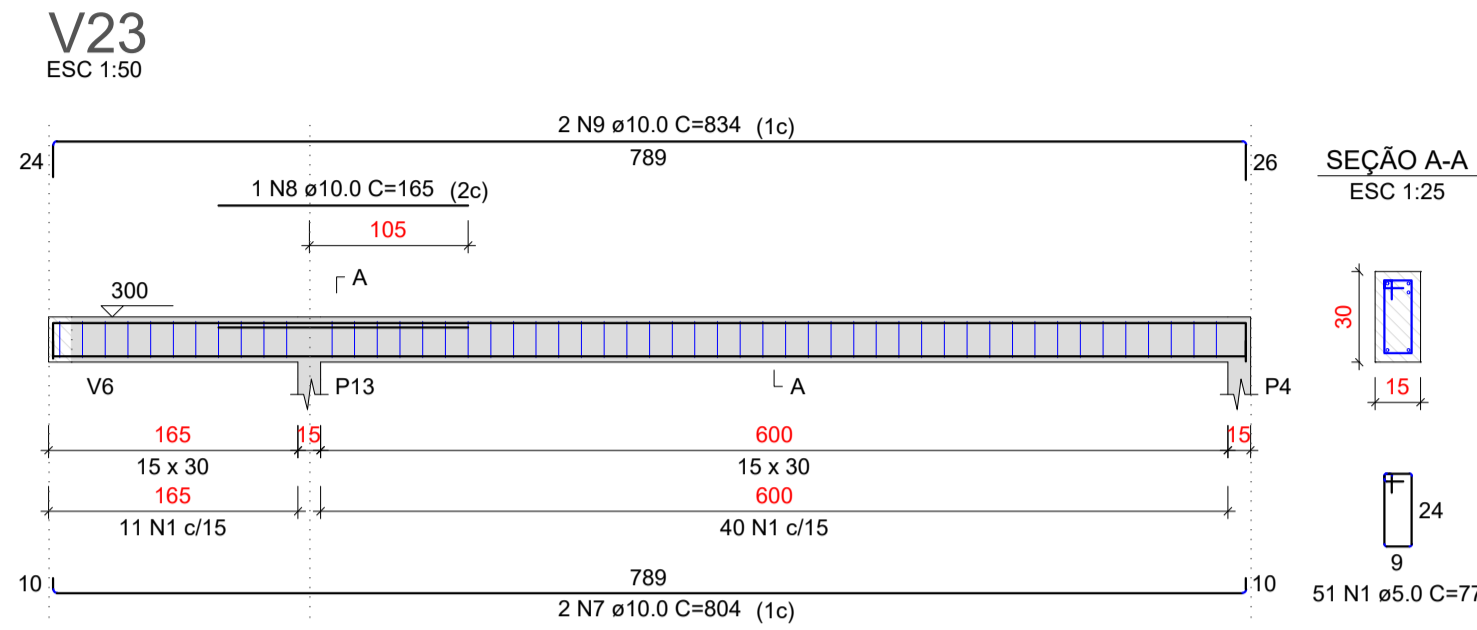


RELAÇÃO DO AÇO

AÇO	N	DIAM (mm)	QUANT	C.UNIT (cm)	C.TOTAL (cm)
CA60	1	5.0	434	77	33418
CA50	2	8.0	6	870	5220
	3	8.0	2	480	960
	4	8.0	2	510	1020
	5	8.0	4	890	3560
	6	8.0	2	805	1610
	7	10.0	6	804	4824
	8	10.0	1	165	165
	9	10.0	2	834	1668
	10	10.0	2	881	1762
	11	10.0	2	170	340
	12	10.0	2	833	1666
	13	10.0	2	834	1668
	14	10.0	2	639	1278
	15	10.0	2	685	1370
	16	10.0	2	816	1632

AÇO	DIAM (mm)	C. TOTAL (m)	PESO + 0% (kg)
CA50	8.0	123.7	48.8
CA60	10.0	153.7	100.9
CA60	5.0	334.2	51.5
PESO TOTAL (kg)			
CA50	149.8		
CA60	51.5		

Volume de concreto (C-25) = 2.88 m³
 Área de forma = 51.45 m²



PREFEITURA MUNICIPAL DE PORTO DE MOZ

TÍTULO: ESCOLA POLO COM 5 SALAS DE AULA
 ASSUNTO: VIGA DE COBERTURA
 DATA: 09/06/2022 INDICADA LOCAL: VILA NOVA-GUAJARA ZONA RURAL DO MUNICIPIO DE PORTO DE MOZ
 RESPONSÁVEIS TÉCNICOS: MATHEUS BEN-HUR COSTA SOUZA, CREA-PA 1518192939
 BRUNO VIANA PAMPLONA, CREA-PA 16949D

EST 7/7
 REVISÃO: 00