

RELAÇÃO DO AÇO

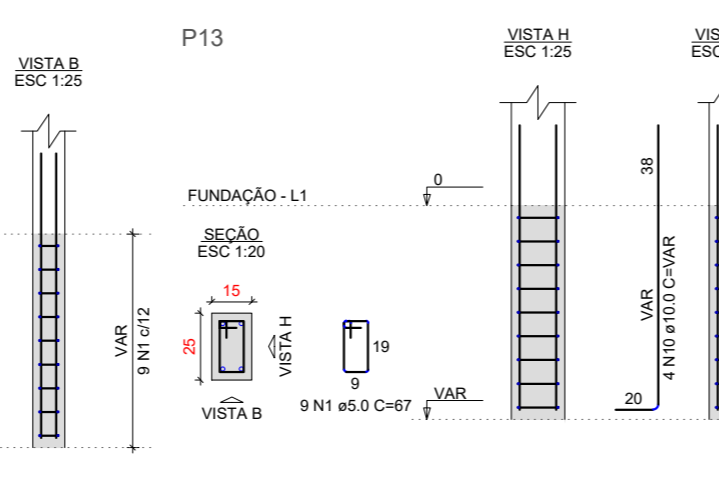
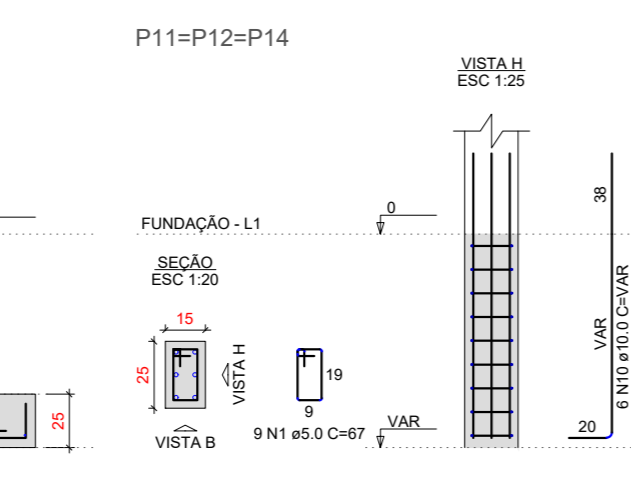
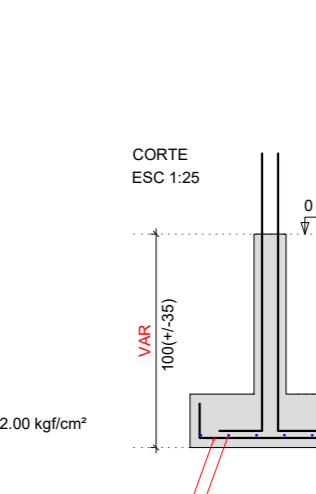
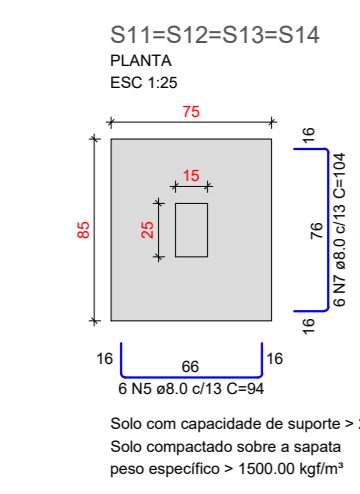
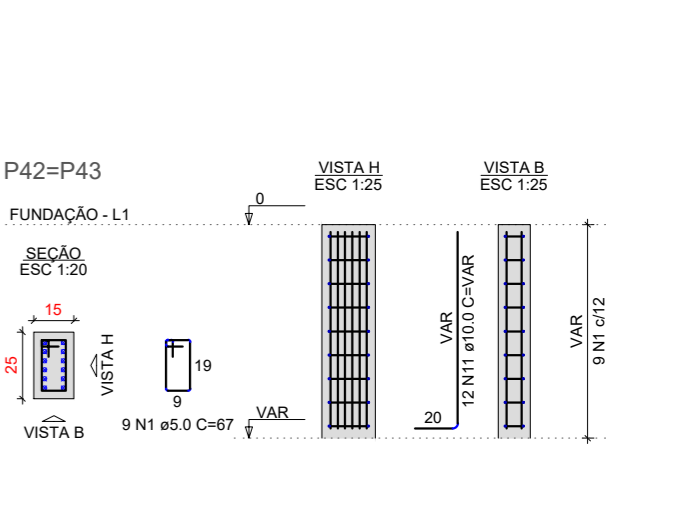
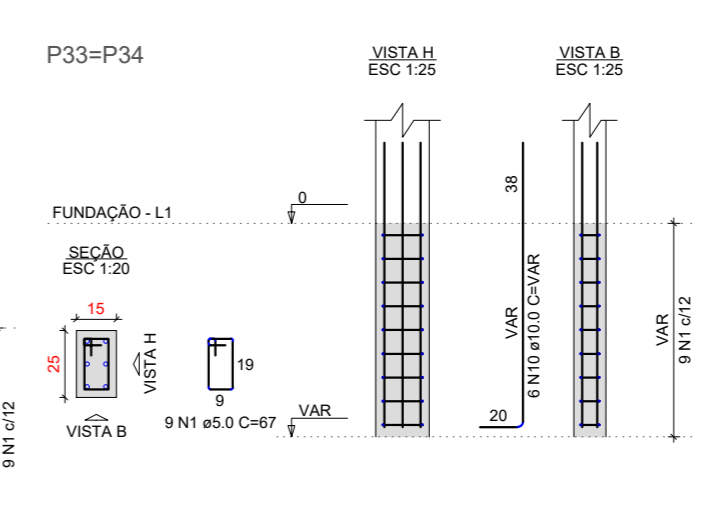
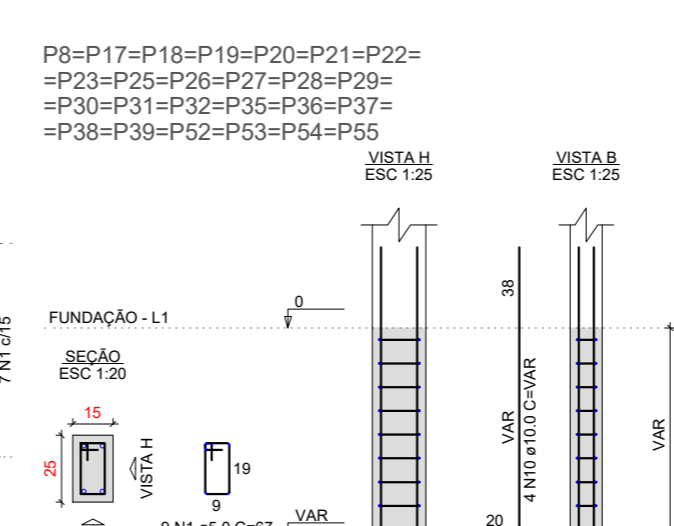
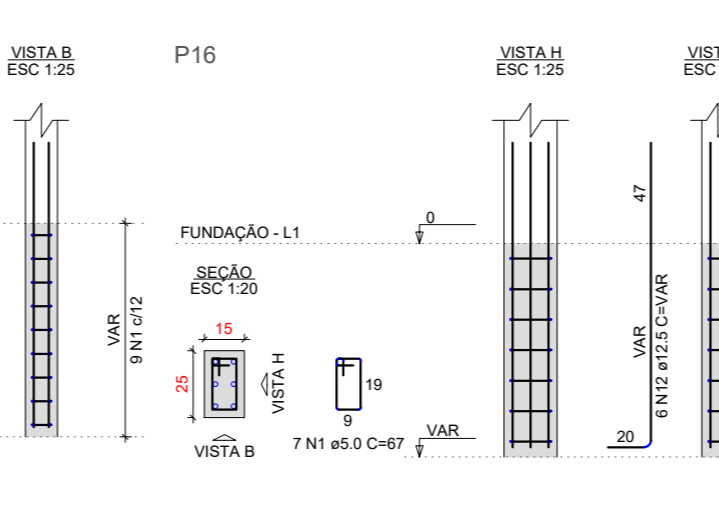
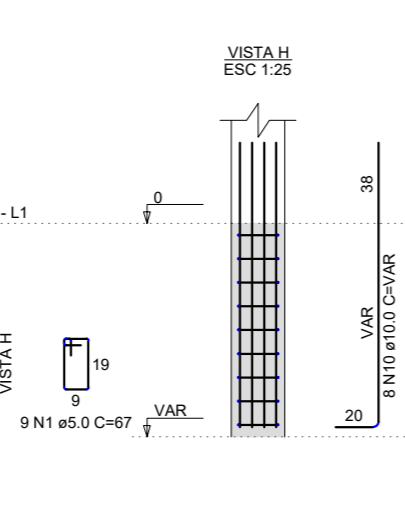
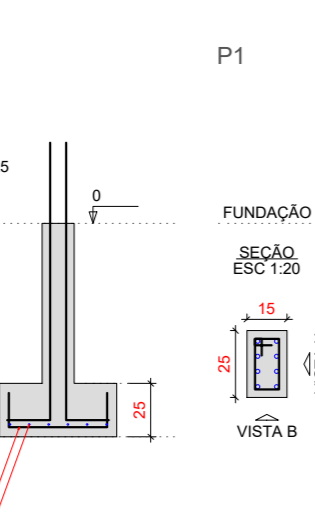
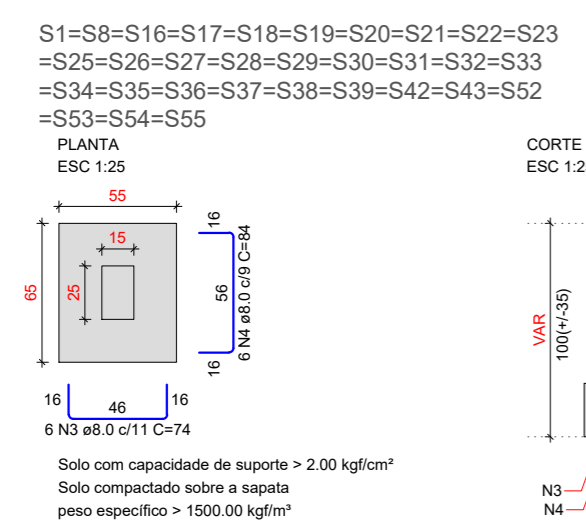
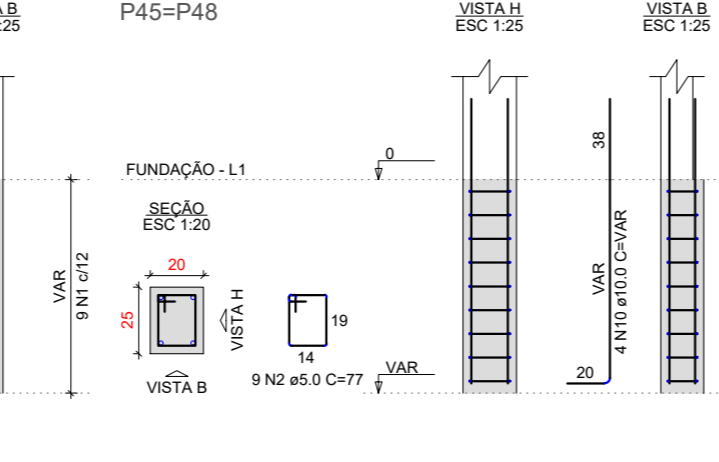
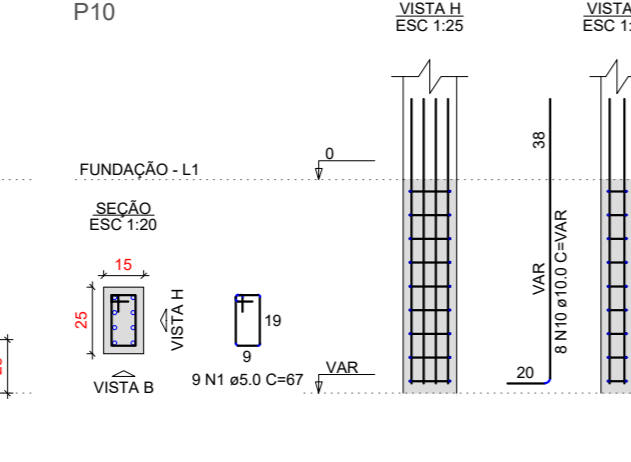
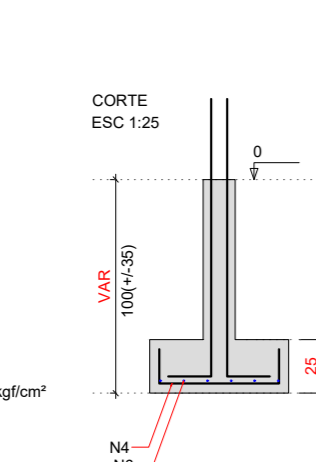
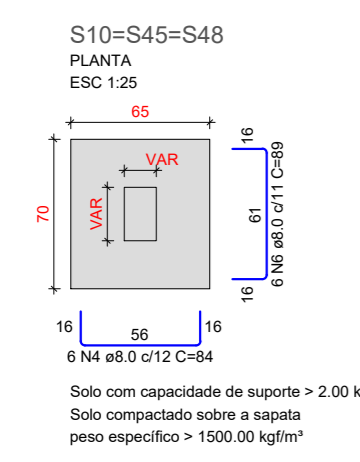
P1	4xP2	P6
P7	25xP8	3xP9
P10	3xP11	P13
P15	P16	2xP33
2xP40	2xP42	2xP45
5xP46	31xS1	2xS6
3xS10	4xS11	5xS15
10xS24		

AÇO	N	DIAM (mm)	QUANT	C.UNIT (cm)	C.TOTAL (cm)
CA60	1	5.0	383	67	25661
	2	5.0	198	77	8316
CA50	3	8.0	186	74	13764
	4	8.0	276	84	23184
	5	8.0	36	94	3384
	6	8.0	48	89	4272
	7	8.0	24	104	2496
	8	8.0	30	99	2970
	9	8.0	60	79	4740
	10	10.0	238	VAR	VAR
	11	10.0	36	VAR	VAR
	12	12.5	12	VAR	VAR

RESUMO DO AÇO

AÇO	DIAM (mm)	C.TOTAL (m)	PESO + 0% (kg)
CA50	8.0	548.1	216.3
	10.0	401.4	247.5
CA60	12.5	19.2	18.5
	5.0	339.8	52.4
PESO TOTAL (kg)			
CA50		482.2	
CA60		52.4	

Volume de concreto (C-25) = 7.33 m³
Area de forma = 80.42 m²



PREFEITURA MUNICIPAL DE PORTO DE MOZ

TÍTULO: ESCOLA POLO COM 5 SALAS DE AULA

ASSUNTO: ESTRUTURA DA FUNDAÇÃO

DATA: 09/06/2022 ESCALA: INDICADA LOCAL: VILA NOVA-GUAJARA ZONA RURAL DO MUNICIPIO DE PORTO DE MOZ

RESPONSÁVEL TÉCNICO: MATEUS BEN-HUR COSTA SOUZA, CREA-PA 1518192939 BRUNO VIANA PAMPLONA, CREA-PA 16949D

FUND. 3/6

REVISÃO: 00