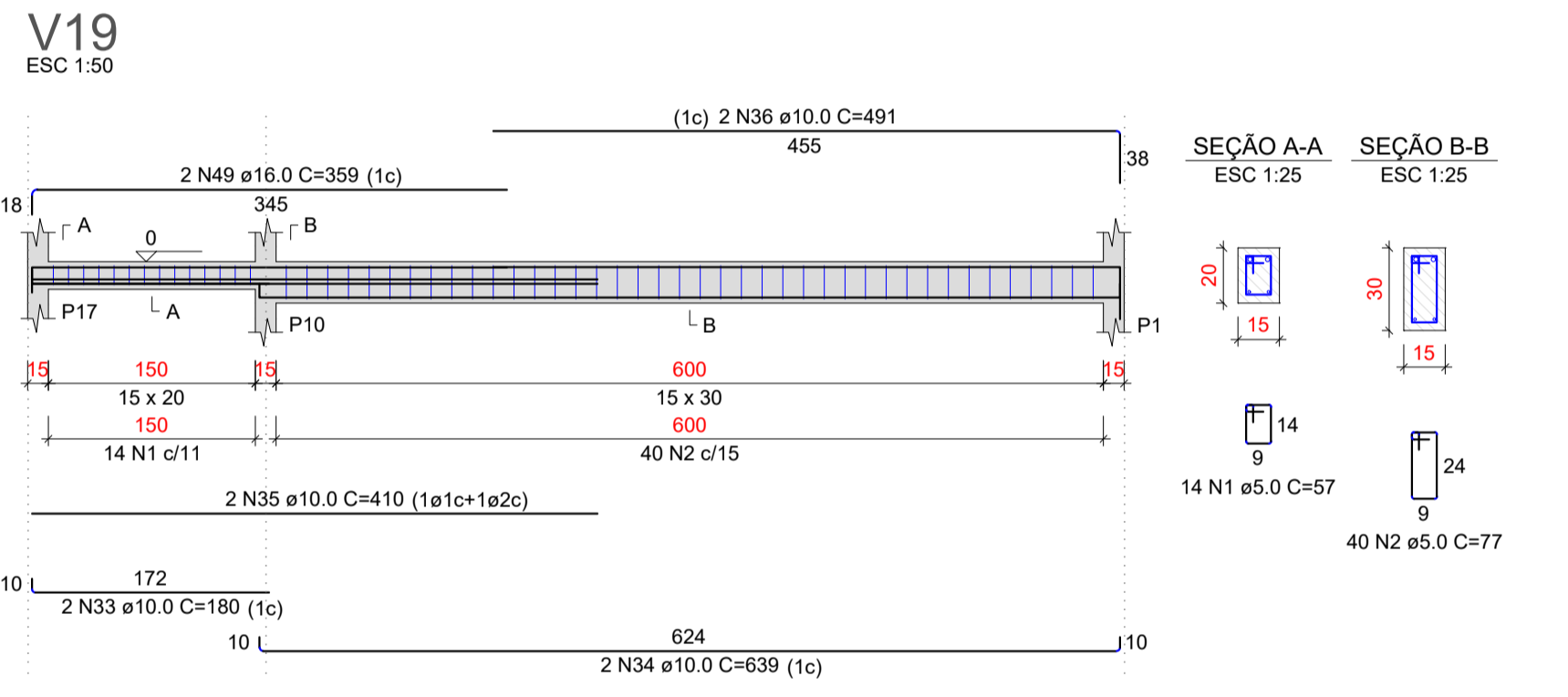
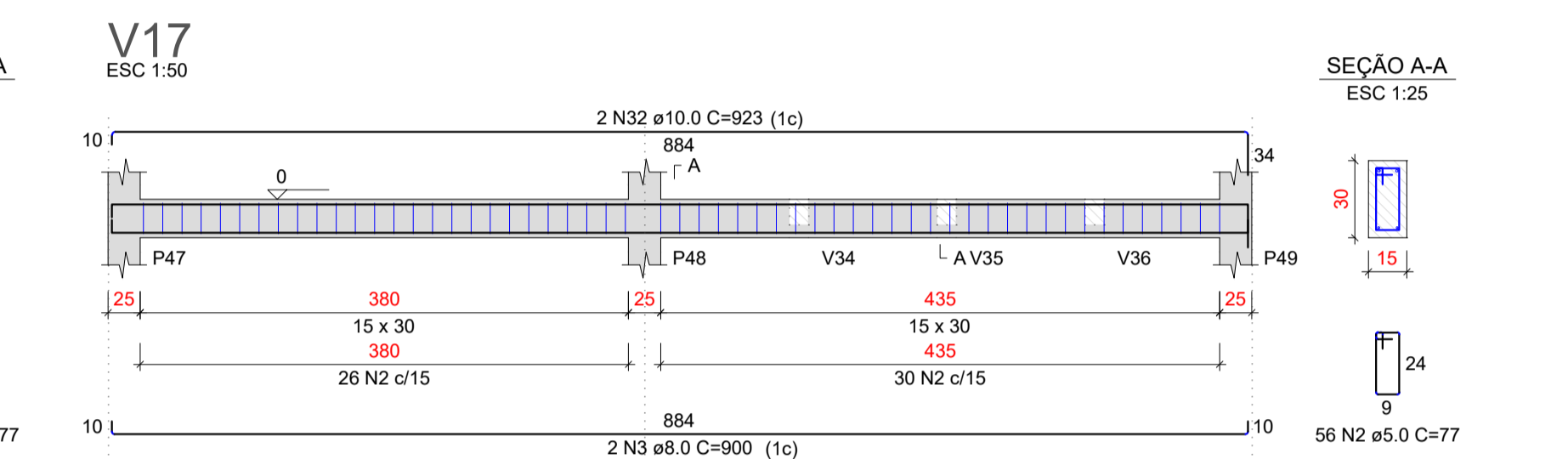
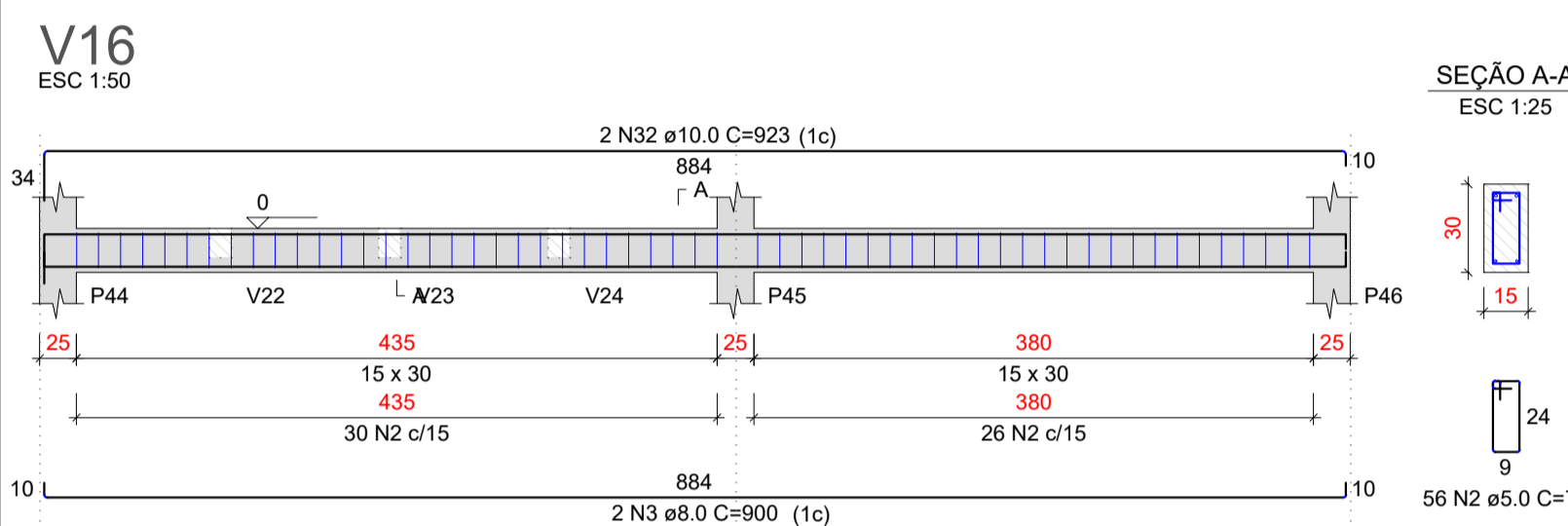
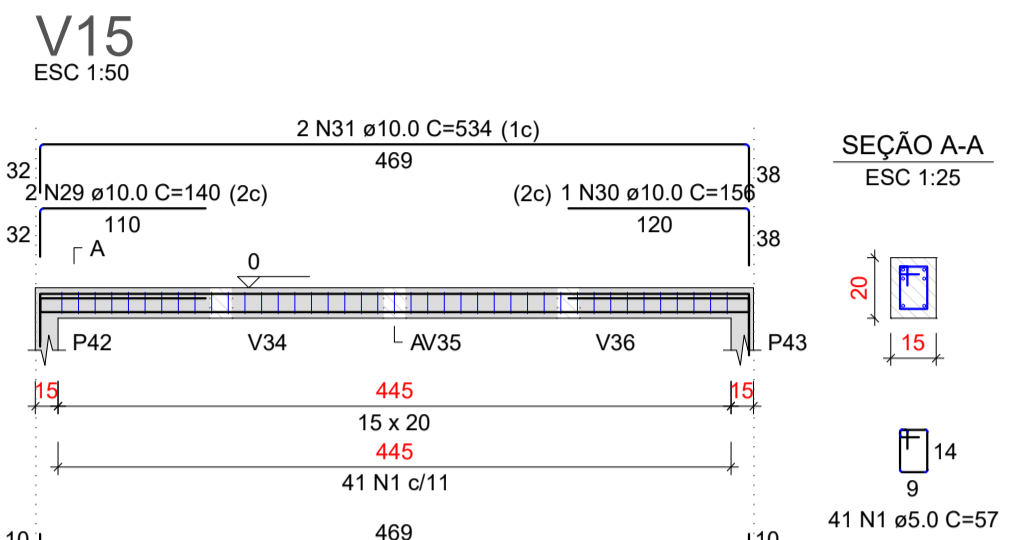
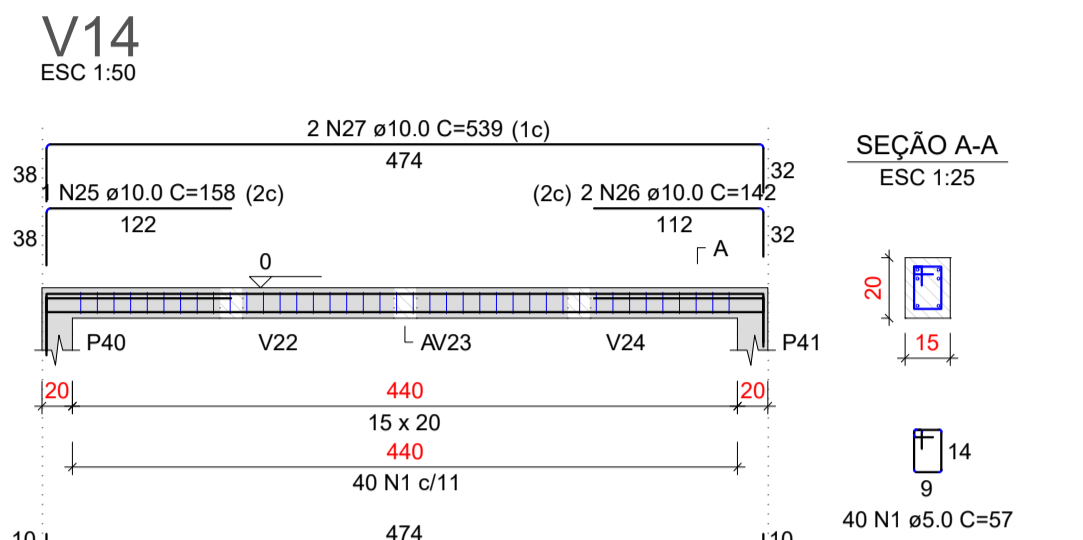
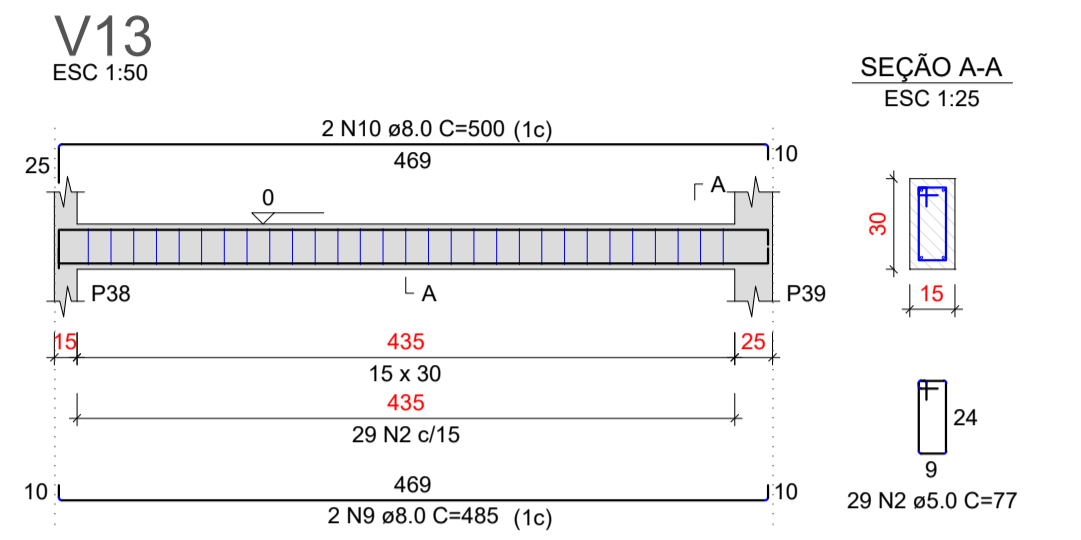
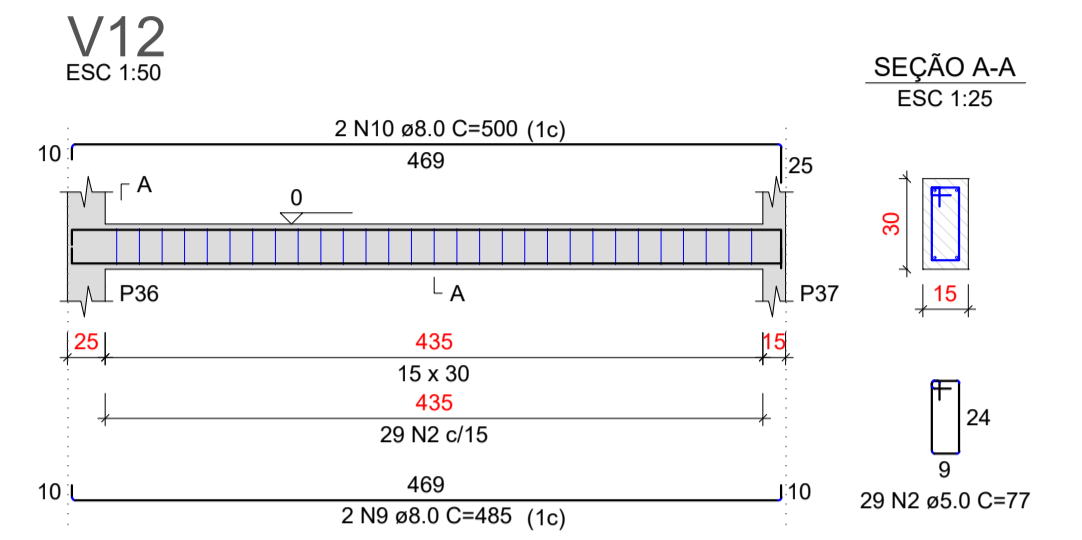
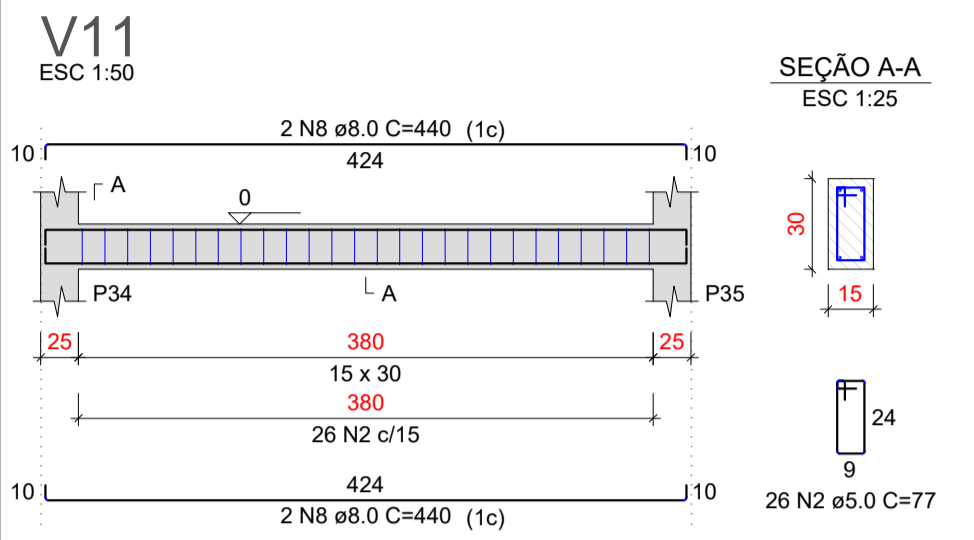


RELAÇÃO DO AÇO

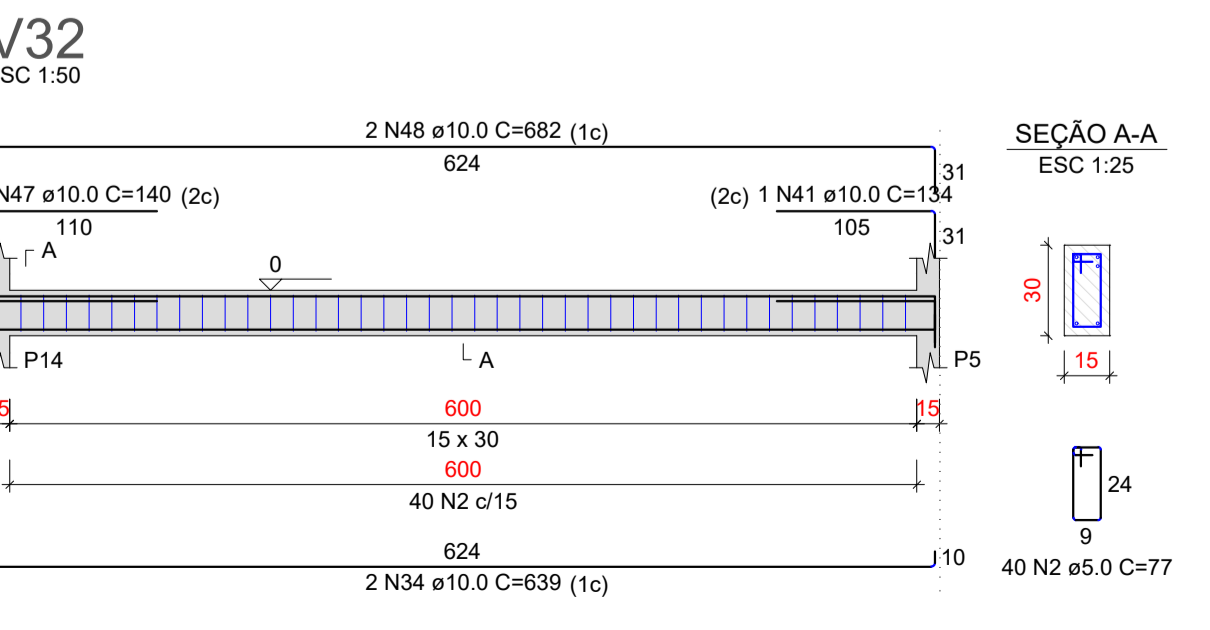
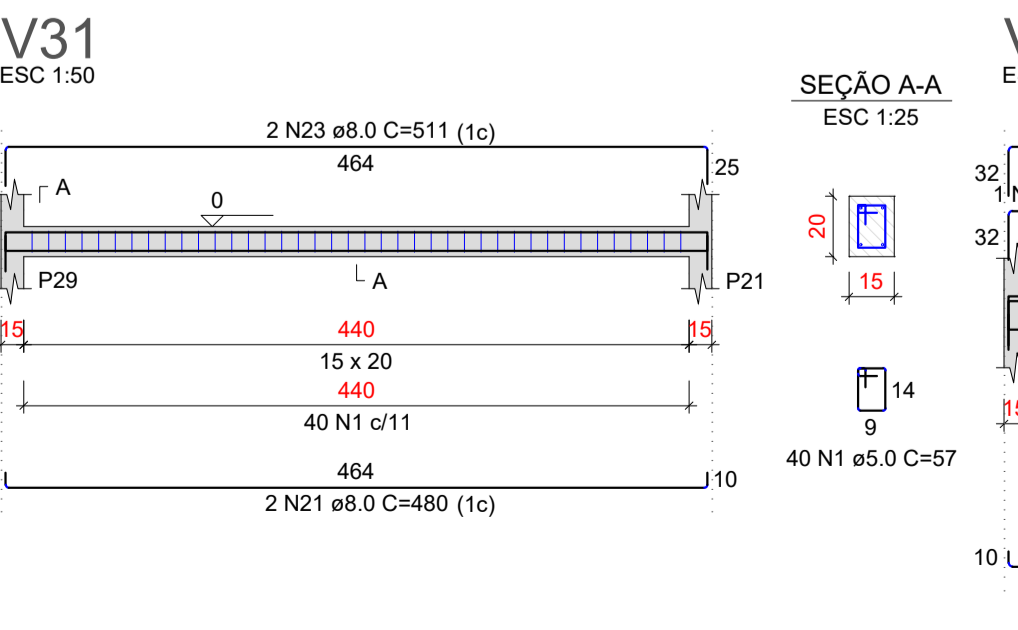
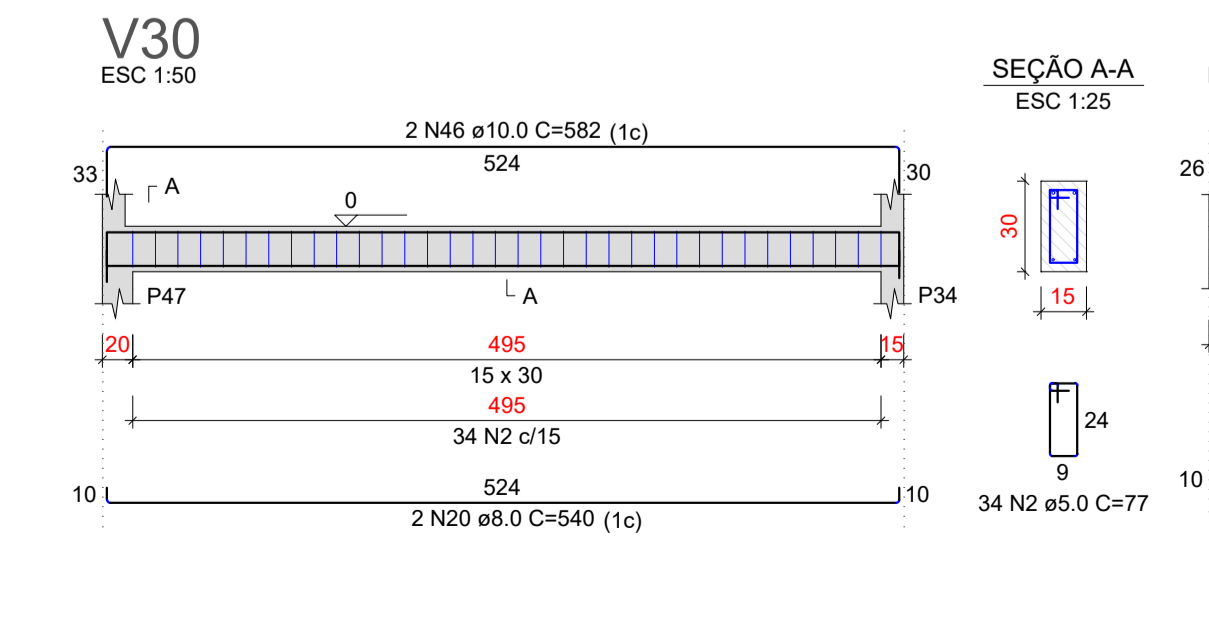
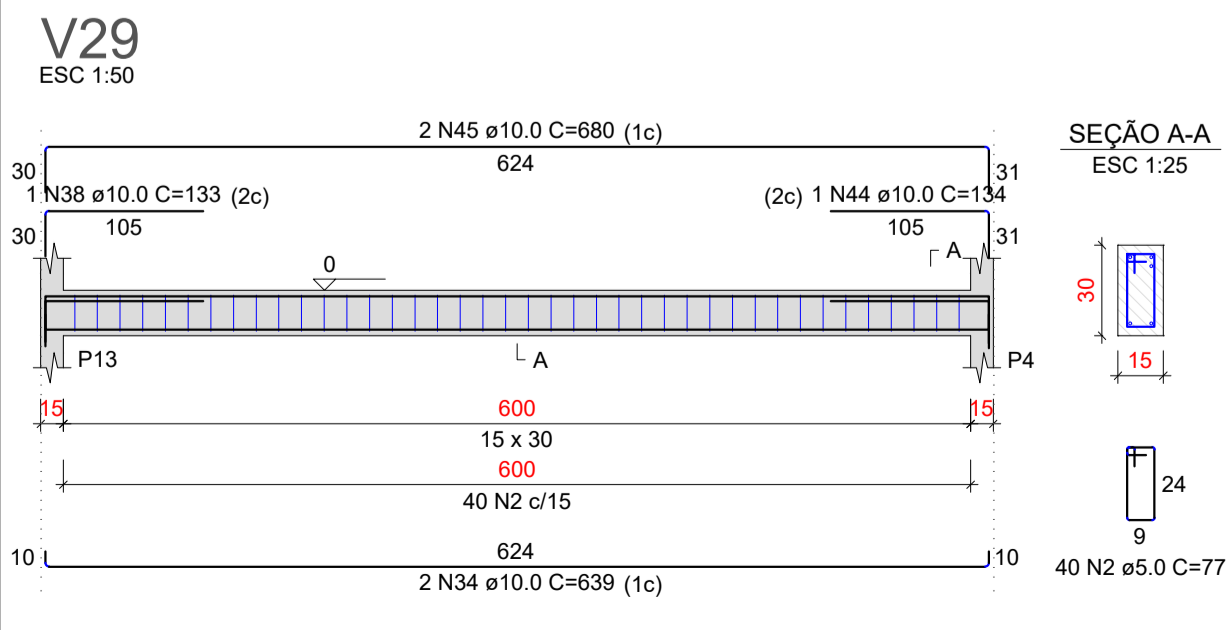
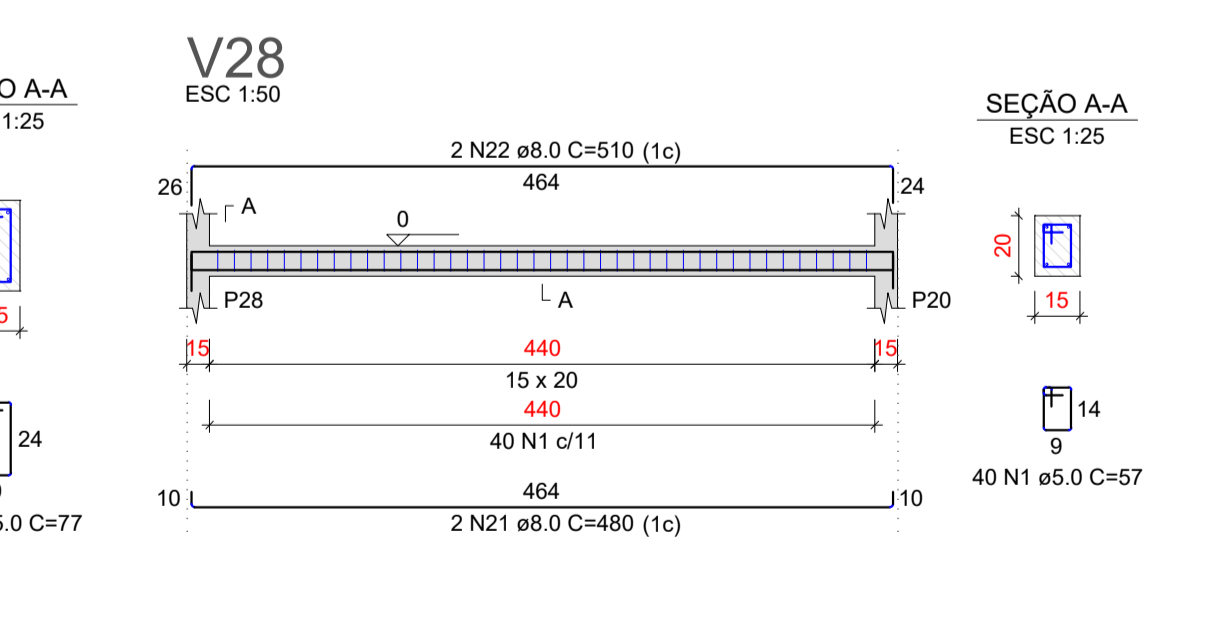
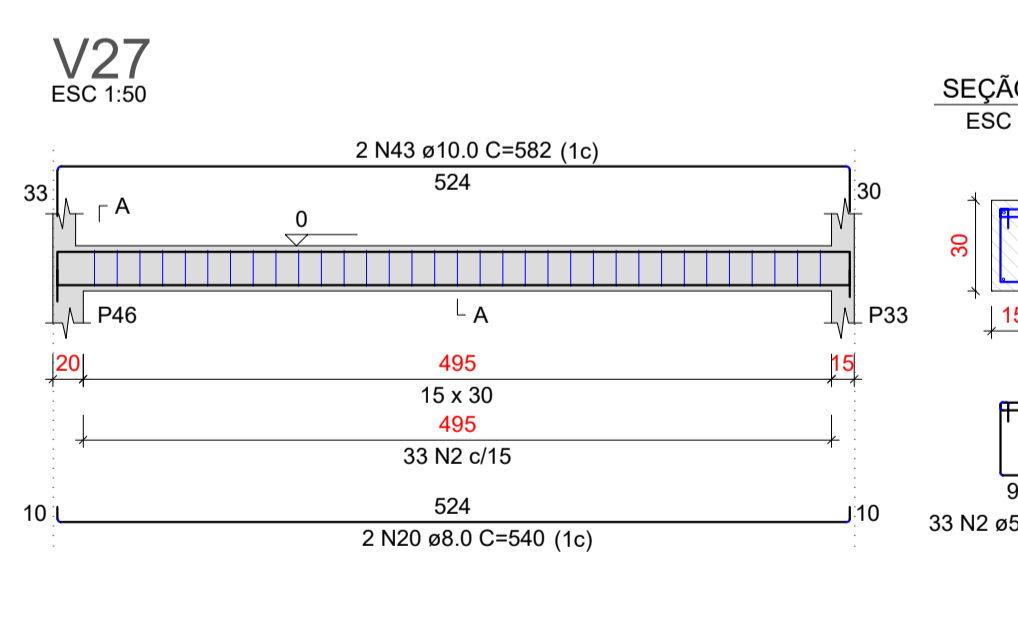
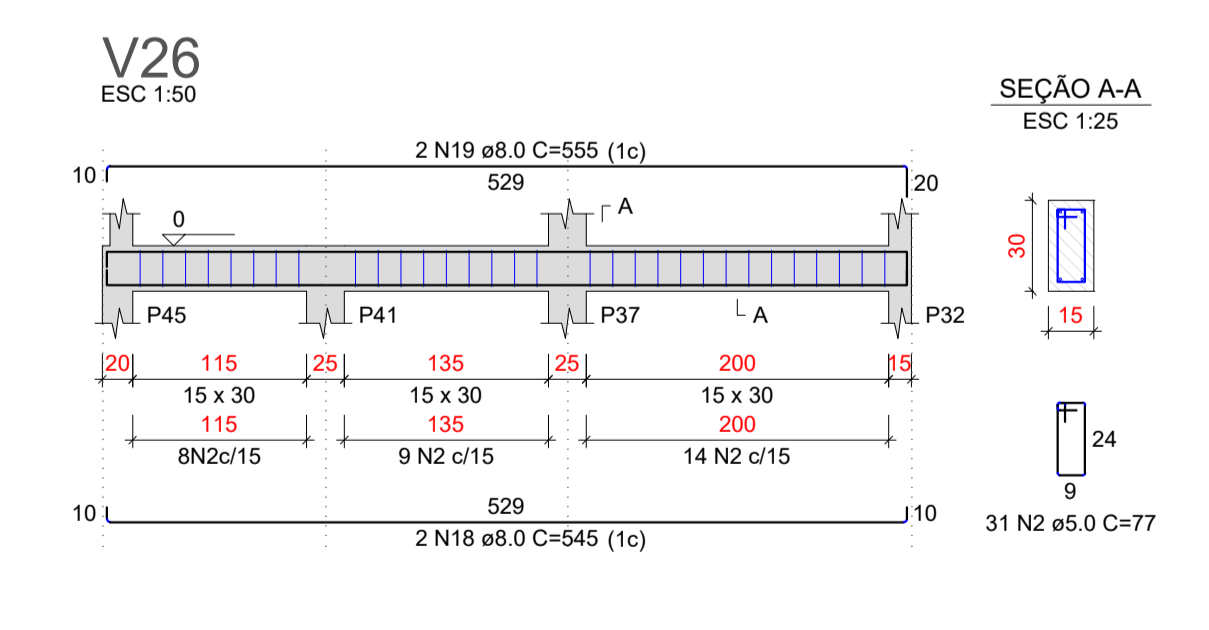
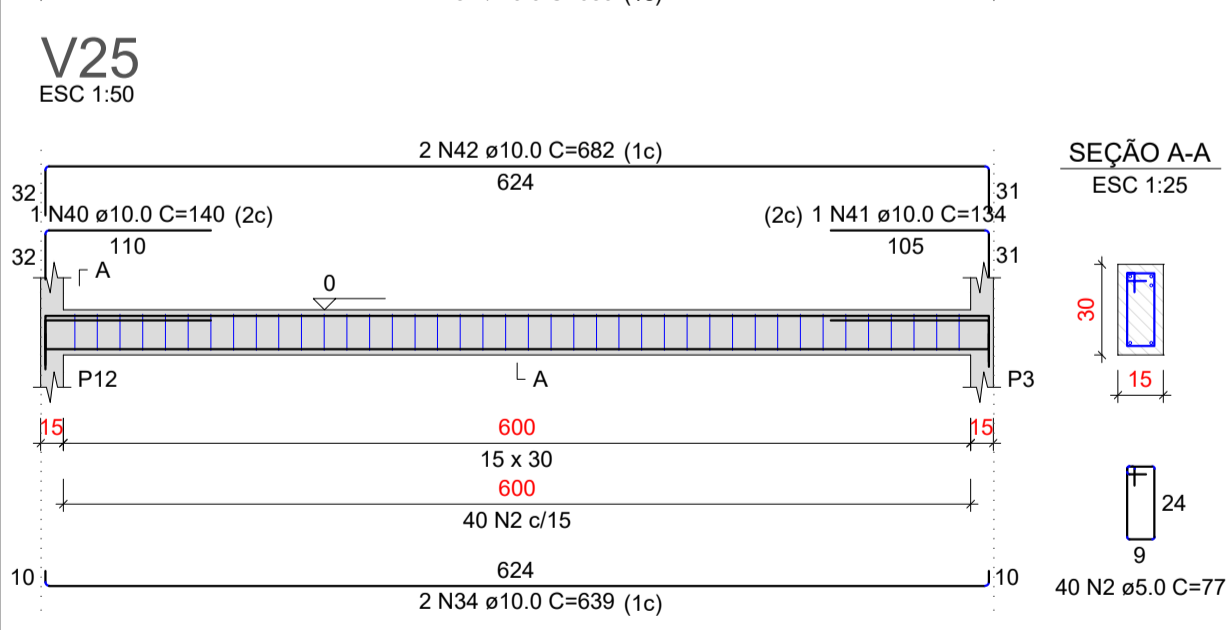
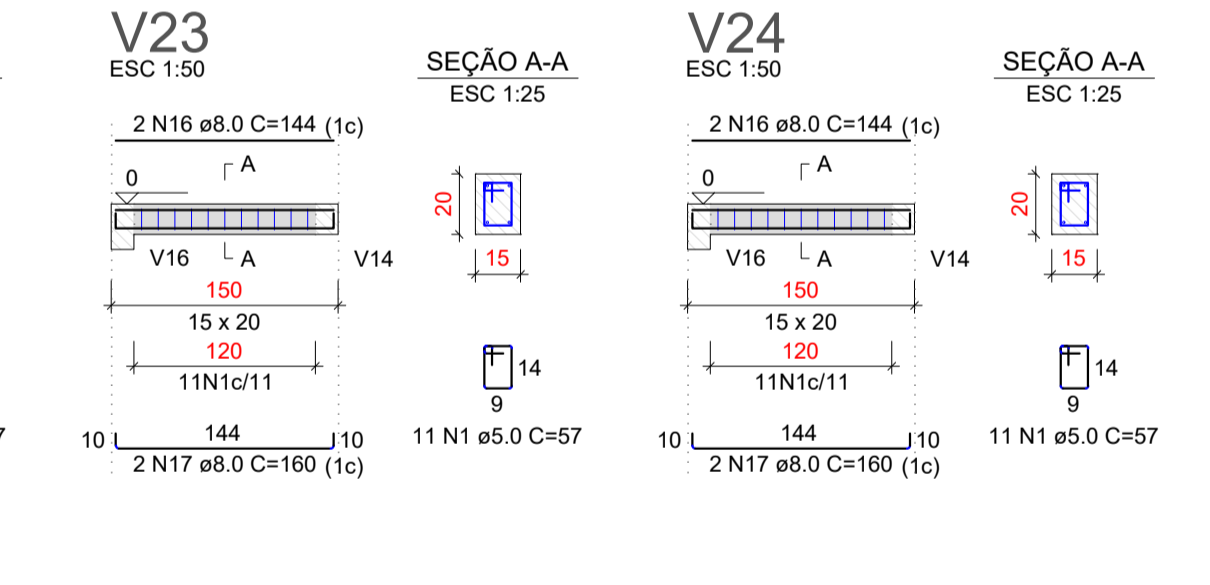
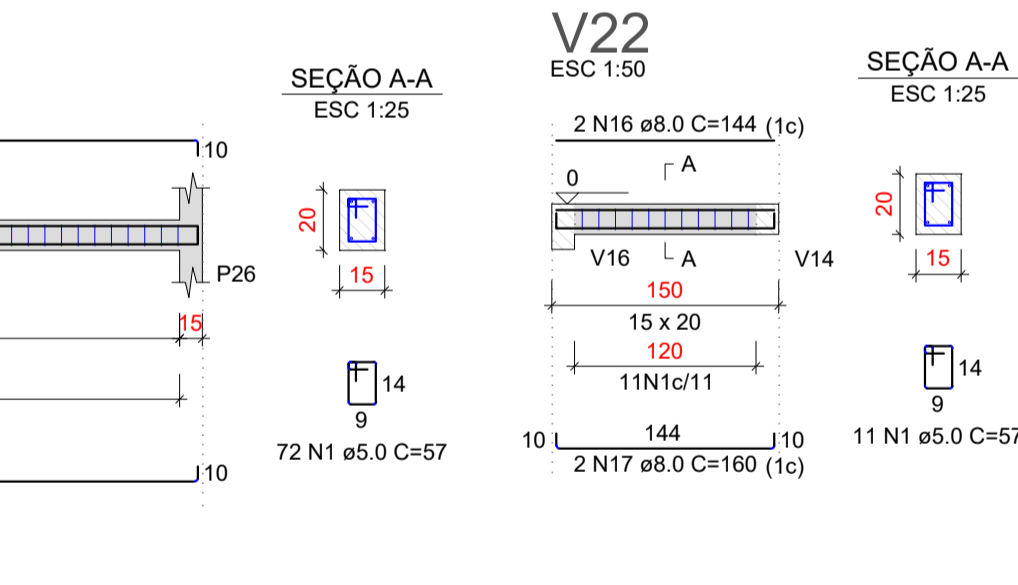
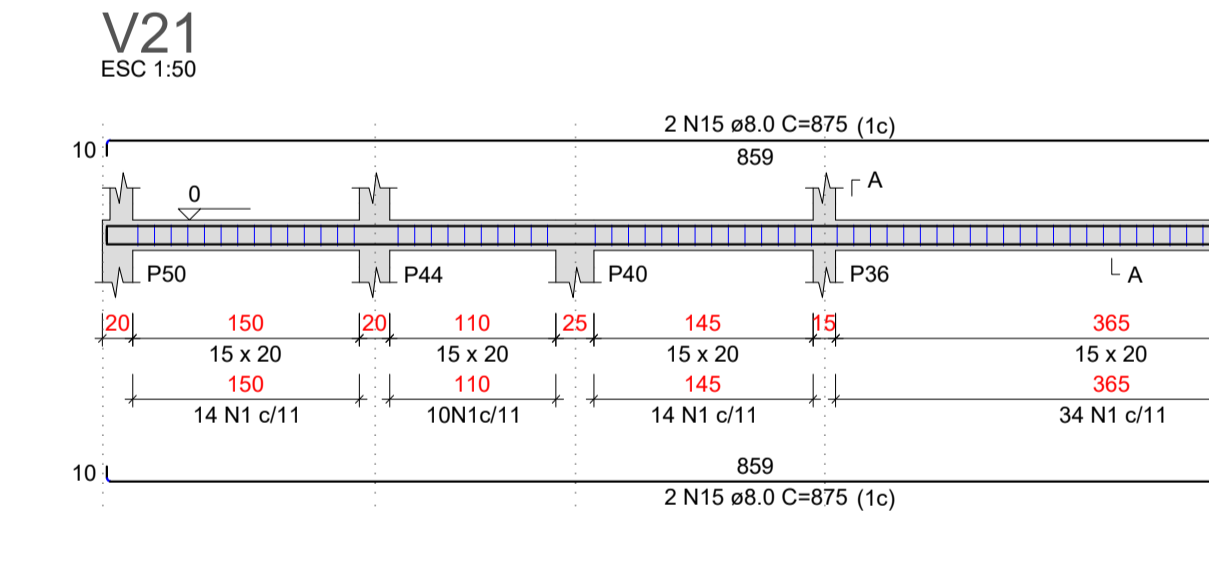
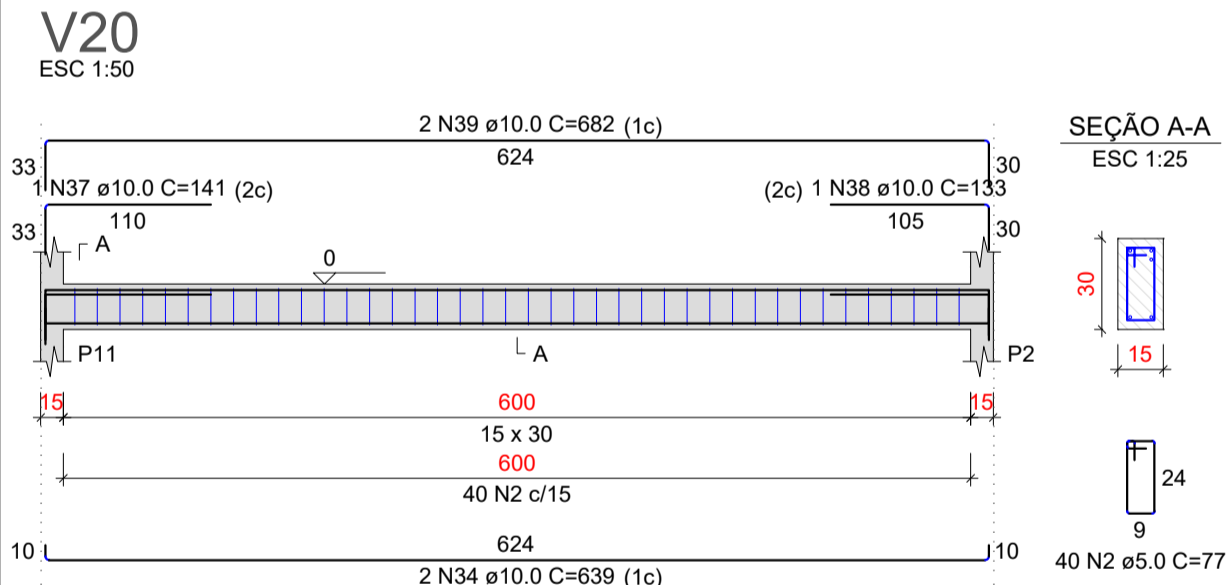
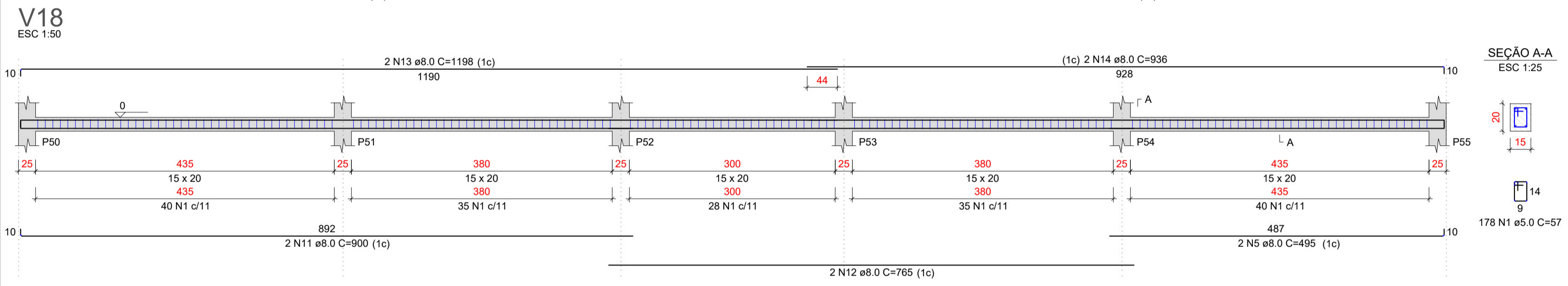
AÇO	N	DIAM (mm)	QUANT	C.UNIT (cm)	C.TOTAL (cm)
V8					
V11					
V14					
V17					
V20					
V23					
V26					
V29					
V32					
CA50	1	5.0	636	57	36252
	2	5.0	520	77	40040
	3	8.0	8	900	7200
	4	8.0	2	765	1530
	5	8.0	4	495	1980
	6	8.0	4	485	1940
	7	8.0	2	172	344
	8	8.0	8	440	3520
	9	8.0	4	485	1940
	10	8.0	4	500	2000
	11	8.0	2	900	1800
	12	8.0	2	765	1530
	13	8.0	2	1198	2396
	14	8.0	2	936	1872
	15	8.0	4	875	3500
	16	8.0	6	144	864
	17	8.0	6	160	960
	18	8.0	2	545	1090
	19	8.0	2	555	1110
	20	8.0	4	540	2160
	21	8.0	4	480	1920
	22	8.0	2	510	1020
	23	8.0	2	1022	2044
	24	10.0	2	489	978
	25	10.0	1	158	158
	26	10.0	2	142	284
	27	10.0	2	539	1078
	28	10.0	2	484	968
	29	10.0	2	140	280
	30	10.0	1	156	156
	31	10.0	2	534	1068
	32	10.0	4	923	3692
	33	10.0	2	180	360
	34	10.0	10	639	6390
	35	10.0	2	410	820
	36	10.0	2	491	982
	37	10.0	1	141	141
	38	10.0	2	133	266
	39	10.0	2	682	1364
	40	10.0	1	140	140
	41	10.0	2	134	268
	42	10.0	2	682	1364
	43	10.0	2	582	1164
	44	10.0	1	134	134
	45	10.0	2	680	1360
	46	10.0	2	582	1164
	47	10.0	1	140	140
	48	10.0	2	682	1364
	49	16.0	2	359	718



RESUMO DO AÇO

AÇO	DIAM (mm)	C.TOTAL (m)	PESO + 0% (kg)
CA50	8.0	419.5	165.5
	10.0	280.8	160.8
	16.0	7.2	11.3
CA60	5.0	762.9	117.6
PESO TOTAL (kg)			
CA50			337.7
CA60			117.6

Volume de concreto (C-25) = 5.55 m³  
Área de forma = 104.08 m²



**PREFEITURA MUNICIPAL DE PORTO DE MOZ**

TÍTULO: ESCOLA POLO COM 5 SALAS DE AULA

ASSUNTO: VIGAS DE FUNDAÇÃO

DATA: 09/06/2022 INDICADA

LOCAL: VILA NOVA-GUAJARA ZONA RURAL DO MUNICÍPIO DE PORTO DE MOZ

RESPONSÁVEL TÉCNICO: MATHEUS BEN-HUR COSTA SOUZA, CREA-PA 1518192939

BRUNO VIANA PAMPLONA, CREA-PA 16949D

FUND. 5/6

REVISÃO: 00